

BC

NEWS | DESIGN | INNOVATION | TECH | COLLABORATION | LEADERSHIP

BC
BUILD CANADA
Construction Profile Magazine

EXCLUSIVE INTERVIEWS

UNFILTERED CONVERSATIONS WITH THE BUILDERS OF CANADA

LFG

Visit our website
WWW.BUILD-CANADA.COM

Chevalier Morales
900 Saint-Jacques:
Between Past,
Modernity, and
Mobility

CONSTRUCTION
PROFILE MAGAZINE
APRIL 2026

build

BC

**ELEVATE
YOUR
PRODUCT
STRATEGY**

We link your brand to Build Canada's dedicated audience of home builders and developers nationwide.

CONNECT

www.build-canada.ca



121WOODWARD

Presented by **SEAN.**, an award-winning Net Zero Ready community builder, families will experience a new standard of energy efficiency and eco-friendly living in these Family-Sized Townhomes.



COMING SOON TO BRACEBRIDGE

TOWNHOMES

from the high **\$500S**

- ✓ FAMILY-SIZED TOWNS SPANNING UP TO 2,330 SQ FT WITH 5 BED & 4.5 BATH
- ✓ OPTION TO CUSTOMIZE INTO TWO SEPARATE SUITES FOR TWO CO-OWNERS
- ✓ AMENITIES: BOCCE BALL COURT, PING PONG TABLE, OUTDOOR CAFE-STYLE SITTING AREA

BLUETTI EB3A SOLAR GENERATOR

Impressive power doesn't have to be in big size.

[Learn More](#)



LISTEN. **CREATE.** INSPIRE



 4 ARCHITECTURE INC.

905.470.7212
4architecture.ca

 HUNT
DESIGN ASSOCIATES INC.

905.737.5133
huntdesign.ca

8966 Woodbine Avenue, Markham, Ontario

When you
need it right,
the first time.

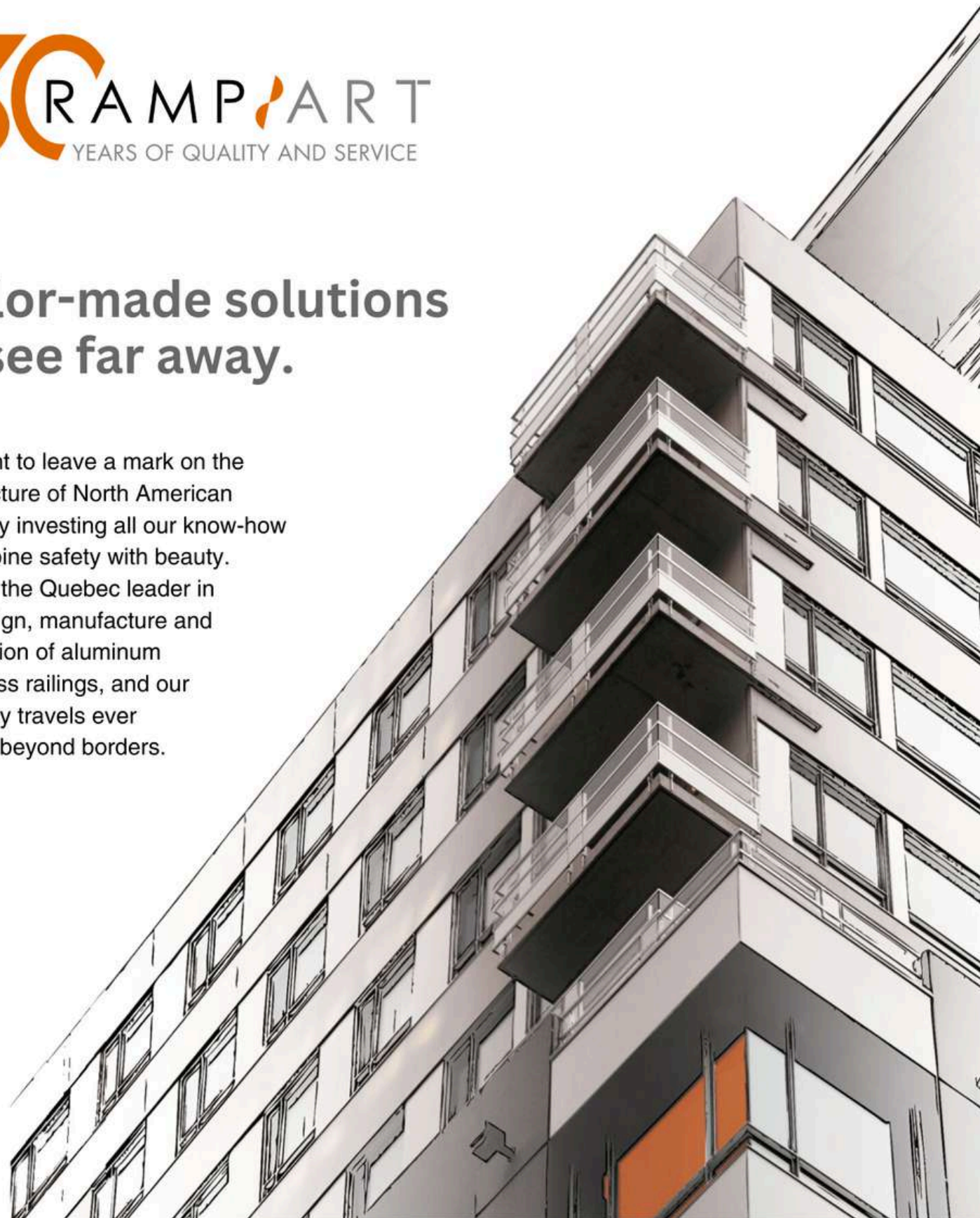
FillmoreRiley | 140
YEARS
FillmoreRiley.com

Fillmore Riley LLP
Lawyers and Trademark Agents



Tailor-made solutions to see far away.

We want to leave a mark on the architecture of North American cities, by investing all our know-how to combine safety with beauty. We are the Quebec leader in the design, manufacture and installation of aluminum and glass railings, and our creativity travels ever further, beyond borders.



IN THIS ISSUE



PAUL JONES
EDITOR

How could robots and AI affect organizational safety protocols?

Welcome to the April Issue of Build Canada Magazine. In this edition, we look into the integration of robotics within the industry and examine how adopting these technologies can minimize the risk of serious injuries and fatalities.

Recent advancements in computer vision, data, and artificial intelligence have significantly improved the capabilities of robotic arms and vehicles. We explore various robots that present increasingly appealing opportunities for companies to boost productivity and foster consistency in the workplace.

Also, as Montreal continues to negotiate the intersection of its built heritage, 900 Saint-Jacques development exemplifies how vertical residential development engages meaningfully with the city's past, present infrastructure, and evolving urban lifestyles.

For those stories and more, keep turning the pages as we continue to Build Canada. ■

CONTACT THE EDITOR

→ LET'S GET TO WORK
Launching a new product, project or community? Reach out by emailing editor@build-canada.ca

Paul Jones

BC
ELEVATE YOUR PRODUCT STRATEGY

We link your brand to Build Canada's dedicated audience of home builders and developers nationwide.

CONNECT

www.build-canada.ca



FURNITURE | MATTRESSES | APPLIANCES



Your Trusted Experts

- Commercial and Residential Furniture and Appliances
- New and Renovation Construction Projects
- Supply Property Management
- Single and Multi-Family Homes

1750 Ellice Ave. Winnipeg MB | 204-989-9900
 Commercialadmin@dufresne.ca

BEYOND THE PAGE

[visit build-canada.ca](http://www.build-canada.ca)

E-Newsletter

BC Newsletter puts your company, product, service in front of our executive readership. Provides a direct line to subscribers, ensuring your content reaches them without platform interference.



Exclusive Interviews

Our Q&A interview series takes a deep-dive look at the companies who are changing the construction industry. Here we speak with leaders, subject matter experts, and the people who are on the ground and in the action.



➤ [INTERVIEWS](#)

Product/Service Features

Distributed through our online e-magazine, website promotion, and email blasts to our builder readership. Promote innovative solutions and ensure that your product reaches the right audience at the right time.



Digital Archive

If you're interested in reading more of Build Canada's past content, visit our digital edition archive at: www.build-canada/archives. There you'll find every- thing from the current edition to a full collection of back issues.



build

PUBLISHED BY:

BC MEDIA

73 Echovalley Dr.
Stoney Creek, Ontario, L8J0H5
www.build-canada.ca

managing editor
Jason Alexander
jason@build-canada.ca

editor
Paul Jones
editor@build-canada.ca

creative direction/production
Melissa Gomes

contributing writers
Milton Shook
Shudeep Chandrasekhar
David Taylor
Nick Aldis
Maggie Monroe

magazine design team
Robert Nabil
Veselin Milacic
Devteam design
Designez studio

ad design
Phil Marks
designer@build-canada.ca


webiste operations
Tristan Singkala
Amit Ranjan

advertising sales
416.835.9669
for questions & comments

Build Canada Magazine is published six times annually in February, April, June, August, October and December by B.C Media , 73 Echovalley Dr, Stoney Creek Ontario. There is no charge for subscriptions in Canada for individuals in the trade and/or qualified requestors.



Wilkinson Construction is a family-owned, innovative construction management company providing hands on collaboration to execute inspiring projects. We specialize in mid-rise and mixed-use residential and commercial construction in the GTA and beyond.

 416.449.4441

 info@wilkinsonconstruction.ca

 37 Polson Street, Toronto, Ontario, M5A 1A4

THE RED BULLETIN

wilkinsonconstruction.ca

BC Contents

16 News From Across Canada

National News & Current Headlines about projects, products and people.

36 Premier Construction Software

Aisha Ali, President of Premier Construction Software discusses why you can't build the future on a broken foundation.

42 The Pivoine Collection

Embracing both sculptural elegance and simplicity, the Pivoine collection reflects a feminine, airy, and distinctly modern aesthetic.



60

12



52 Dollhouse Loft by StudioAC

Once a toy and bottling factory throughout the 1900s, the building became lofts in the early 2000s. A new opportunity emerged to rework the loft's spatial dynamics.

60 Plateau-Mont-Royal Shoebox

Located in Leslieville, this loft renewal project aims to improve the interior's aesthetics and functionality.



78

Intelligent machinery is reshaping jobsites

Artificial Intelligence (AI) and robotics are increasingly utilized to identify hazards, enforce safety regulations, and respond to emergencies. These intelligent machines provide round-the-clock monitoring, rapid hazard detection, and immediate alerts, enhancing workplace safety like never before. Story, page 66.

78 A Contextually Anchored Residential Tower

The 63-storey tower establishes a cohesive and liveable microcosm within an infrastructural landscape shaped by rail.

90 Shaping Our Communities

How JCB Construction Canada delivers effective building solutions in Montreal.



ON THE COVER:

900 Saint-Jacques prioritizes the diversity of household types and long-term livability. Story, page 78.



JCB Construction President Alexandre-Stéphane Boucher explores the core beliefs and principles that guide the planning and execution of each project.

13

Toronto Edwardian Offers Fresh Look on Canada's Architectural history

Frank Darling, Architect of Canada's Imperial Age

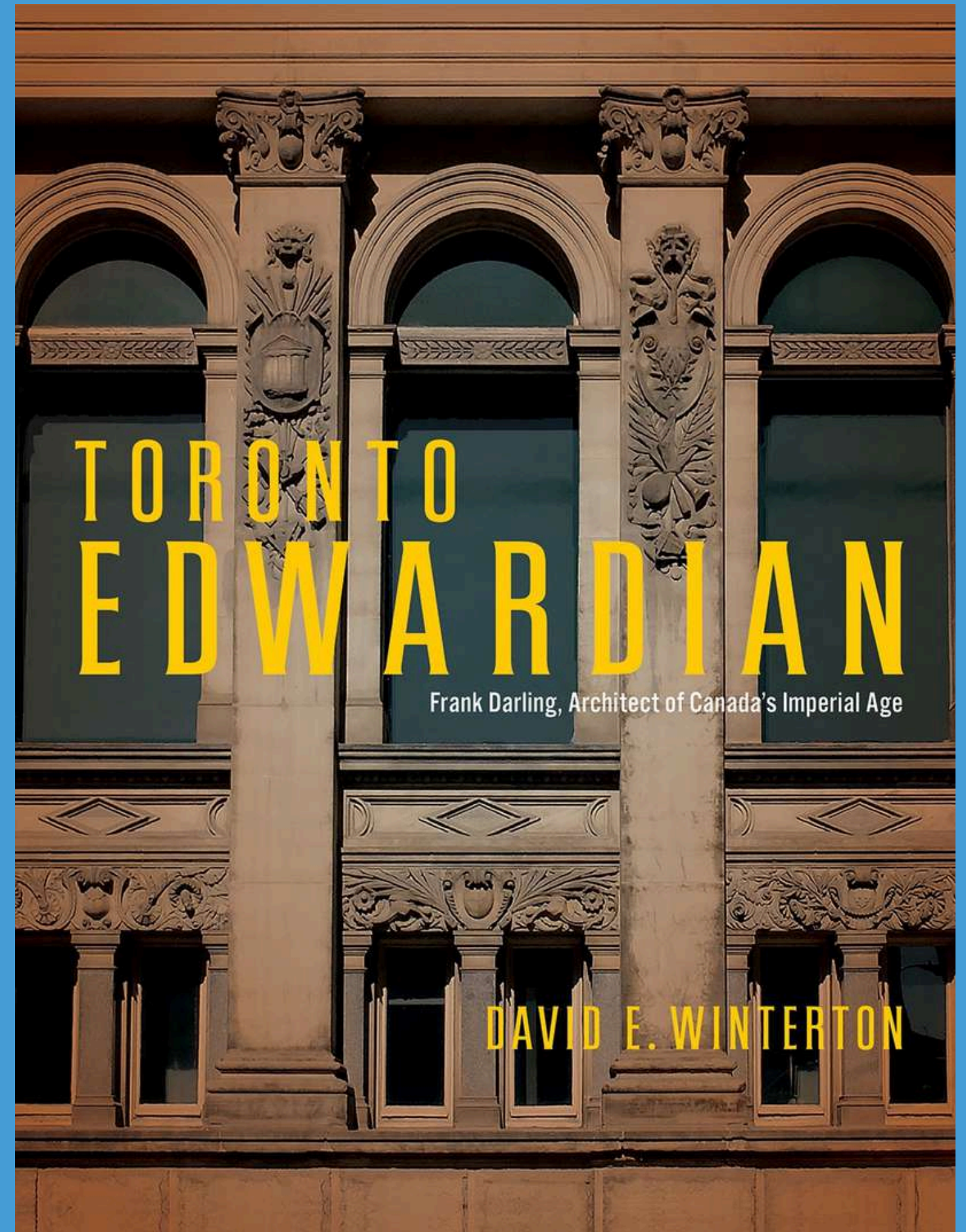
Navigating the architectural history of the Edwardian era and its most accomplished Canadian protagonist.



David Winterton is an author and registered architect, serving as Principal at ERA Architects. He co-leads the firm's heritage residential portfolio, focusing on urban residences and clubhouses in Heritage Conservation Districts.

Toronto's architectural community gathered at the University of Toronto's Regis College to celebrate the launch of *Toronto Edwardian: Frank Darling, Architect of Canada's Imperial Age*, a project supported by ERA Architects and authored by David Winterton, a Principal at the firm. Darling's previously overlooked architectural legacy was feted in one of his most sumptuous Edwardian interior spaces.

Toronto Edwardian is the first monograph on architect Frank Darling and his firm Darling & Pearson, the architects who envisioned Toronto's Edwardian institutional core and many of Canada's most important early 20th-century buildings. Winterton reconstructs Darling's career, and draws connections between his Grand Manner architecture and sociopolitical influences of the late nineteenth and early twentieth centuries. The book unfolds in two distinct parts: the first provides a cultural and patronage context; the second focuses on the individual buildings through chapters devoted to building types. The book intends to address a gap in architectural history by focusing from 1890 to the early 1920s when Darling's firm dominated.



Place des Montréalaises: A Monumental Gesture Inscribing Women's Memory at the Heart of a City

Unifying gesture that reconnects neighbourhoods and provides new perspectives on the city

Designed by Lemay in collaboration with artist Angela Silver and the engineering team at AtkinsRéalis, this major intervention connects Old Montreal to downtown and, above all, inscribes the memory of exceptional women in the urban landscape. this concept harnesses the full potential of an

SOURCE: V2COM / PHOTO CREDIT: VINCENT BRILLANT



architectural approach through stratification, transforming an urban scar into an animated destination: a multifunctional plaza that is simultaneously an inclusive memorial space, a universally accessible path, and a contribution to biodiversity.

Since its opening in spring 2025, Place des Montréalaises has become a beloved spot for locals and tourists, fostering community and connection. Its distinctive architecture makes it an emblematic site in Montreal, symbolizing a vibrant legacy and living memory.

FEDS ANNOUNCE \$2.5M FOR ABBOTSFORD SUBSIDIZED HOUSING PROJECT



The federal government, along with Communitas Supportive Care Society announced over \$2.5 million in federal funding for 14 homes in Abbotsford for people needing subsidized housing, including those with disabilities. Located in central Abbotsford, the project consists of a three-plex and a four-plex. Both buildings are single-storey, wood frame homes, with disabilities. Located in central Abbotsford, the project consists of a three-plex and a four-plex. Both

City-wide zoning and policy resulted in 2,585 approvals for new homes.

buildings are single-storey, wood frame homes, with six single-room occupancy (SRO) rooms in three-plex and eight SRO rooms in four-plex. All of the units are fully accessible. Individuals may be eligible to access additional supports, such as employment and life-skills, through Communitas Supportive Care Society or other community partners.

The Government of Canada also recognized the City of Abbotsford's achievement in completing 100 percent of the initiatives in its Housing Accelerator Fund Action plan one year earlier than planned. City-wide zoning and policy resulted in 2,585 approvals for new homes, including 444 affordable homes with many on City-owned land.

NEWS AND INSIGHTS

BUILDFORCE CANADA HAS A NEW EXECUTIVE DIRECTOR IRWIN BESS

Bess brings extensive national experience in labour market analysis, economic policy and digital transformation with a strong track record of translating labour market data into workforce insights that support Canada's construction and maintenance sectors. He has held senior leadership roles across the federal public service, leading major transformation and service innovation initiatives, the organization notes.

ELECTRICIAN CRONK IS THE NEW CHAIR OF WORKSAFEBC

Red Seal electrician by trade, William Laird Cronk spent more than two decades working in the marine, communication, commercial, industrial and residential sectors in B.C. WorkSafeBC board of directors is appointed by the B.C. minister of labour and serves as stewards of WorkSafeBC and the workers' compensation system.

BY THE NUMBERS

Total Building Investment

↓ \$23.4B

down 1.9% monthly but up 7.8% compared to Jan 2025.

February monthly housing starts

↑ 256,005

units in February with slightly by 0.4%.

Montréal

↑ 18%

year-over-year increase this month, driven by higher multi-unit and single-detached starts.

Monthly Housing Starts and Other Construction Data Tables
Learn more about why housing starts matter on [CMHC's Housing Observer](#).

Trevor Doucette of the Synergy Group of Companies has been elected Board Chair of CCA

TREVOR DOUCETTE

TITLE: SENIOR DIRECTOR OF OPERATIONS

COMPANY: SYNERGY GROUP

INDUSTRY: GENERAL CONTRACTING

Prior to his role as Senior Director of Operations at Synergy Group, Doucette held various leadership positions at Graham from 2013 to August 2023, including Vice President of Construction, General Manager, District Manager, and Operations Manager.



CCA is pleased to welcome Trevor Doucette who has been appointed Chair of the Board of Directors for the 2026-2027 term. CCA would like to thank its outgoing Chair, Francis Roy, for his leadership and dedication to Canada’s construction industry.

Looking forward, Doucette shared his vision for the association over the next term. “We must remain steadfast in our mission, embrace innovation, and strengthen our mission, embrace

The Canadian Construction Association (CCA) is pleased to announce changes to its Board of Directors following its 2026 Annual General Meeting

innovation, and strengthen our connections with our stakeholders, our clients, and our industry,” said Doucette. “Together, we can build on our success, learn from our challenges, and chart a course that will leave a lasting impact as we navigate the ever-changing landscape of construction.”

Joining Doucette on CCA’s 2026-2027 Board of Directors are: Cory Richter (Vice-Chair), Quorex Construction Services (SK), Sara Becker, Ideal Construction Services Ltd. (AB) Bill Black, Brown, The Cahill Group of Companies (NL), Frank Faieta, Trisura Guarantee (ON), Peter Grose, Westland Construction Ltd. (MB) Marty Harris, Aecon (ON), Cathy Kent, Black & McDonald Limited (ON) Tina Larson, Amrize (MB), Daniel Lessard, Pomerleau (QC), Allan MacIntosh, Marco Group Limited (NS). CCA represents more than 18,000 member firms drawn from 57 local and provincial integrated partner associations across Canada.

CATERPILLAR DEBUTS AI-POWERED EQUIPMENT AND VIRTUAL ASSISTANT

Information-rich AI client helps industry turn insights into action, transforms worksite experience for customers, operators and technicians

Caterpillar Inc. new Cat AI Assistant, an AI-solution that allows Cat customers to engage with Caterpillar’s equipment and portfolio of digital applications in new, powerful ways. With Cat AI Assistant, Caterpillar is making it easier for customers to buy, maintain, manage and operate their equipment — no matter where they are. The launch marks a major step forward for Industrial AI, redefining how work gets done by combining data, AI and heavy equipment to help customers improve productivity, efficiency and safety.

Built on more than a century of Caterpillar innovation, Cat AI Assistant unifies a diverse portfolio of applications and vast amounts of quality data into one simple experience.



For fleet managers & owners

An extra set of eyes on their equipment. Refining insights and to help turn unplanned incidents into planned maintenance.

For technicians

With a voice command, and zero interrupting the task at hand, access the right section from a library of thousands of instruction manuals.

For machine operators

It’s a coach in the cab, providing operators with information to work smarter and safer without switching screens, returning to the yard or losing focus.



SOURCE: CITY OF CALGARY | L-R: MAYOR GONDEK, PREMIER SMITH, MINISTER FREELAND, MINISTER DREESHEN

CONSTRUCTION STARTS ON CALGARY'S GREEN LINE LRT SE PROJECT

After more than a decade of planning, the City of Calgary was joined by the Honourable Chrystia Freeland, Minister of Transport and Internal Trade, Government of Canada, the Honourable Danielle Smith, Premier of Alberta and Minister of Transportation and Economic Corridors, the Honourable Devin Dreeshen, Government of Alberta, and Mayor of Calgary, Jyoti Gondek to celebrate a major milestone for public transit in Calgary with the official groundbreaking for the SE Segment and kick-off for Phase 1 of the Green Line Light Rail Transit (LRT).

The Green Line LRT is Calgary's largest-ever infrastructure investment, with \$6.248 billion in funding from The City of Calgary, Government of Alberta, and Government of Canada, and reflects years of community vision, hard work, and collaboration. This project is more than a transit line—it's a commitment to building Calgary's best future and a more

connected, accessible, and prosperous city for all Calgarians.

"Today's groundbreaking is truly a significant milestone for the Green Line LRT project and a testament to the power of collaboration in catalyzing major transit projects. This is a tangible step towards making public transit a more accessible, reliable, efficient, and desirable option for Calgarians. We will continue working with our partners to make life easier and more convenient for Calgarians and to make Calgary and Alberta's economy stronger," stated the Honourable Chrystia Freeland, Minister of Transport and Internal Trade.

By building the foundation to facilitate future extensions further south and north, the Green Line will unlock much needed opportunities for housing and development and connect Calgary's growing population with a fast, frequent, and reliable, high quality transit system.



BEAUTITONE UNVEILS 2026 EXTERIOR COLOUR OF THE YEAR, 'BARK'

"Bark" is a warm, transparent stain that enhances the natural grain of wood, elevating any outdoor structure, from decks, pergolas and sheds to fences and siding. Formulated with advanced resins and UV-resistant pigments, "Bark" is engineered to withstand harsh weather conditions, resist peeling and cracking, and provide dependable protection against moisture damage. In a culture increasingly shaped by the artificial, "Bark" celebrates

”**"BARK" REVEALS THE NATURAL QUALITIES OF THE WOOD SURFACE.**

"the beauty of the unaltered, inspired by nature's palette and revealing the natural qualities of the wood surface. Bark grain of the wood feels deeper, the texture more pronounced, and the colour natural. Contractors can feel confident using it for projects that demand both visual impact and reliable, long-term performance.

2025 CANADIAN CONSTRUCTION ASSOCIATION WINNERS

Pinnacle Leader Award
Geoff Smith

Environmental Achievement Award
PCL Construction

Workforce Excellence Award
Orion Construction

Partner Association Award
Vancouver Regional Construction Association

Gold Seal Award
Simpson Building Contractors Ltd.

Young Leader Award
Sarah O'Malley

Community Leader Award
Marco Group

Community Leader Award
Lyndsey Shaw and Rebecca Gelech

Excellence in Innovation Award
PCL Construction

Excellence in Innovation Award
JCB Construction Canada

National Safety Award
Peter Kiewit Sons ULP

INSIDE CANADA AND CHINA MASS TIMBER AGREEMENT

The agreement involves collaboration and joint research focused on utilizing wood construction for high-rise buildings

Wood Construction and Green Building MOU

Key Deal: The B.C. Forests Ministry signed a five-year, Memorandum of Understanding (MOU) to integrate mass timber and wood-frame technology into Chinese urban/rural developments and build a supply chain for wood construction. Focuses on strengthening the "industrial chain" for wood construction, specifically targeting mass timber, tall wood buildings, and prefabrication.

Energy Infrastructure Cooperation

Key Deal: Cooperation on clean and conventional energy, with potential for Chinese investment in Canadian energy projects,

including offshore wind and modernization of power grids. Canada has expressed openness to Chinese investment in Canadian energy projects, including in the oilsands, to bolster and modernize infrastructure. A key part of the deal involves allowing up to 49,000 Chinese electric vehicles (EVs) into the Canadian market at a reduced tariff of 6.1%, with a goal of stimulating joint-venture manufacturing in Canada.

Steel and Aluminum Remissions (Construction Materials)

Key Deal: Canada is extending its tariff-remission program for specific Chinese steel and aluminum products through to the end of 2026.



GRAHAM MARKS CENTENNIAL YEAR



"Reaching 100 years is something only a small number of companies ever get to do," said Andy Trewick, President and CEO of Graham. "It reflects generations of resilience, progress and a legacy of people who have shown up with purpose, had pride in quality work and stood confidently behind what they build. Which is what we still do every day.

Founded in 1926 as a small, family-owned company in Saskatchewan working on the railway, Graham has grown into a leading employee-owned construction firm, delivering complex infrastructure, buildings, industrial projects across Canada and the United States. Graham's centennial

theme, Defining a Century, reflects the company's past and its forward-looking mindset.

While the anniversary honours 100 years, the focus remains on the future and meeting the demands of complex projects. From critical infrastructure to places of care and connection that ensure communities thrive, to partnerships in the energy sector that power economies, Graham's people come to work every day with the knowledge that whenever a project ends, our legacy begins.

[READ MORE](#)

ONTARIO INTRODUCING LEGISLATION TO IMPROVE TRANSIT AND BUILD MORE HOMES

The Ontario government introduced the Building Homes and Improving Transportation Infrastructure Act that would, if passed, protect Ontario’s economy and keep workers on the job by improving the way people and goods move across the province and speeding up the construction of new homes.

“The Building Homes and Improving Transportation Infrastructure Act is the latest step our government is taking to tackle red tape, reduce unnecessary costs, and streamline approvals,” said Rob Flack, Ontario Minister of Municipal Affairs and Housing. “Along with our



communities along the Northlander corridor. The legislation would also help get more shovels in the ground on new housing projects by reducing barriers to homebuilding and clarifying and streamlining site plan rules.

“Our government is taking action to reduce gridlock and keep drivers moving across the province as we continue our work to protect Ontario,” said Prabmeet Sarkaria, Minister of Transportation. “The legislation we’re tabling today would improve transportation options in northern communities, support the future expansion of the One Fare program and make better use of existing highway capacity so people can spend less time in traffic.”

recent announcements to expand HST relief to all new-home buyers and recognize municipalities that cut their development charges, we’re making it easier for more people in Ontario to afford a home.”

The proposed legislation and accompanying measures would reduce gridlock and make public transit more convenient by simplifying fares, opening High Occupancy Vehicle (HOV) lanes to more drivers and permitting rideshare services in



MSDL ARCHITECTS ANNOUNCES THE APPOINTMENT OF A NEW PARTNER



SOURCE: V2COM PHOTOGRAPHY: MSDL ARCHITECTS

Menkès Shooner Dagenais LeTourneux Architects is very pleased to announce the appointment of Matthieu Nicolas Devito as a partner. His addition to the team of shareholders concretely illustrates the firm’s vision of fostering a strong next generation that contributes to the firm’s development with dynamism and passion. Since joining MSDL Architects, Matthieu Nicolas has quickly and naturally embodied the firm’s values and played a key role in the design of major projects, including École

secondaire du Bosquet in Drummondville (Award of Excellence in Architecture from the Ordre des architectes du Québec, 2025), and Ax.c, L’Hymne des Trembles, and he is currently working on the Satellite Jetty project at YUL Montreal-Trudeau International Airport. His dedication and deep conviction that quality of life is inextricably linked to quality of architecture are fully reflected in the architectural vision of MSDL Architects. Since 1994, Menkès Shooner Dagenais LeTourneux Architects has placed people at the heart of the projects it designs, creating innovative architecture that promotes sustainable development and the long-term viability of the built environment.

OTTAWA INTRODUCES A \$1.7 BILLION FUND TO ASSIST PROVINCES IN REDUCING HOMEBUILDING COSTS

The federal government is introducing a substantial \$1.7-billion fund aimed at assisting provinces and territories in reducing the costs associated with home construction.

This federal funding is designed to help provinces lower development fees or other levies on new housing. It will accelerate the pace of construction across Canada, and funds can be utilized to enhance productivity in the construction sector, diminish internal trade barriers between provinces and territories to facilitate the construction of more homes.

While Prime Minister Mark Carney's Liberal government aims to double the rate of homebuilding in Canada, various regulations, zoning restrictions, and other barriers across provincial and municipal jurisdictions have posed significant challenges to scaling up construction efforts.

CASE TL100 MINI TRACK LOADER: POWER AND PRECISION FOR BETTER JOBSITE CONTROL

Here's proof that powerful things come in small packages. Introducing the CASE TL100 mini track loader. This compact, ride-behind work monster gives you the capabilities to easily crush more jobs, meaning more ways to grow your business. For starters, it comes with either a 42 in. wide track for max stability or a 36 in. narrow track, ideal for squeezing through backyard gates and doorways. It boasts a rated operating capacity of 1,000 lbs., and you can put that muscle to work in a ton of ways.

[READ MORE](#)



ONTARIO INVESTING \$300 MILLION

Enhancing local sports centers, generate jobs, and support future Ontario athletes.

The Ontario government is investing an additional \$300 million in the Community Sport and Recreation Infrastructure Fund (CSRIF) to build and upgrade sport and recreation facilities across the province.

Announced as part of the 2026 Ontario Budget: A Plan to Protect Ontario, this brings total government funding for the program to \$500 million, and will support local community projects, create good-paying jobs, promote active, healthy living and give the next generation of Ontario athletes a place to train and grow their skills.

Building on the success of the initial \$200 million funding, the \$300 million top-up makes CSRIF the largest investment in the sport and recreation sector in the province's history. The first round of funding has supported nearly 100 projects, including the construction of 17 new facilities and the revitalization of 77 more.

To date, this fund has supported 94 projects across Ontario

Skyjack SJ5545 E: Highest Working Height Scissor

With a working height of 51 ft (15.54 m) and load capacity of 770 lbs (394 kg), this E-Drive model boasts responsive control and maneuverability, making it ideal for construction, maintenance, and industrial applications.

The adaptive variable speed brushless drive system provides extraordinary duty cycles, smooth automatic transition from high to low speed on a grade including 25% gradeability. Fully proportional drive and lift controls offer efficiency, and improved torque and traction.

The scissor stack features fully welded cross-bracing to increase rigidity and improves operator comfort. The SJ5545 E is drivable at full height and offers a 2-person wind-rating at 22 ft (6.7 m) for optimal performance and utilization.

[READ MORE](#)



LONDON'S 2026 RENEW CONSTRUCTION PROGRAM

This year, the program features around \$285 million dedicated to new projects, in addition to \$100 million allocated for ongoing work from the previous year. Such an investment underscores the commitment required to accommodate a

thriving city, ensuring that streets and infrastructure can effectively support a greater number of residents, homes, and businesses in the future.



Rendering: Waterfront Toronto

Federal-Ontario \$8.8B Agreement and Waterfront East Transit Project will enable new housing, according to NAIOP

NAIOP Greater Toronto is commending the newly established Canada-Ontario housing partnership as a pivotal move to overcome stalled projects and enhance housing supply throughout the province.

The agreement allocates \$8.8 billion in federal funding over a span of 10 years and aims to address two major obstacles to development include high development charges and insufficient housing-enabling infrastructure.

The industry association has expressed its support for a plan to reduce development charges by up to 50% for three years in municipalities that encompass the majority of Ontario's population. They believe this initiative will significantly improve project viability, particularly when combined with investments in infrastructure.

NAIOP supports funding for the Waterfront East Light Rail Transit (LRT) project to encourage development in Toronto's eastern waterfront, including East Bayfront and the Port Lands.

The association highlighted a comprehensive package that combines HST relief on new housing, GO Expansion, and regional transit investments to enhance supply in the Greater Toronto and Hamilton Area.

NAIOP aims to collaborate with governments to address development costs and expedite infrastructure delivery, expressing eagerness to implement measures that boost housing supply. NAIOP represents developers, owners, and service providers across the office, industrial, retail and residential sectors.

Ontario's Budget Allocates \$300 Million for Sports and Recreation Facilities

The Ontario government announced in last month's budget that it would increase spending with the Community Sport and Recreation Infrastructure Fund (CSRIF) by \$300 million that will assist to build and upgrade sport and recreation facilities across the province.

"Our government is delivering on our plan to protect Ontario by making historic local investments that strengthen our communities today and for the future," said Sport Minister Neil Lumsden. "The additional \$300 million

in the Community Sport and Recreation Infrastructure Fund will support the construction of new facilities, allowing more families across Ontario to enjoy fun, healthy activities and ensure our local athletes have a place to compete close to home."

To date, the fund has supported 94 projects across Ontario through repairs and rehabilitates existing sport and recreation facilities and new and transformative facilities, including replacements for aging infrastructure.

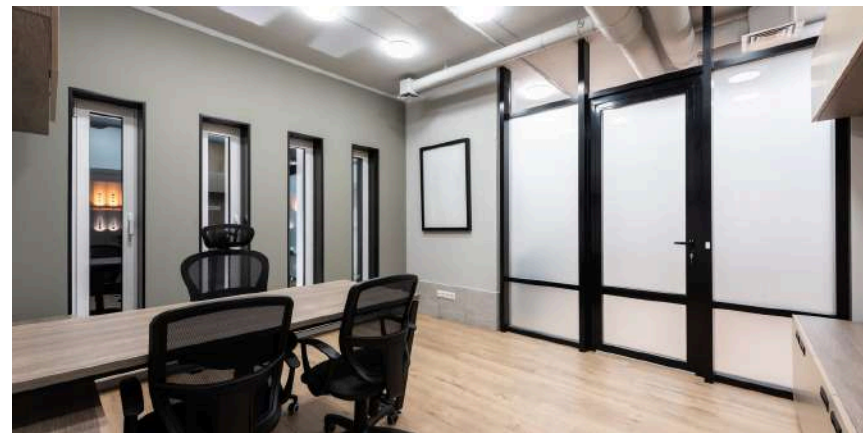
CANADA AND QUEBEC PARTNER TO PROVIDE NEW AFFORDABLE HOMES

Just two months after finalizing a memorandum of understanding concerning the distribution of Build Canada Homes funding, the Governments of Canada and Québec are collaborating to provide nearly 865 new affordable homes throughout Quebec. This initiative represents a total investment of \$200 million. This announcement outlines 14 supportive and transitional housing initiatives that

will generate over 390 homes for those facing or at risk of homelessness, individuals who have encountered domestic violence, people with disabilities, and those with complex mental health needs.

Build Canada Homes will provide approx. \$65M in capital costs, while Quebec will contribute an additional \$65 million.

Excellent And Elegant Dry Wall Solution.



At Alliance Drywall, our mission is to be the premier provider of drywall, insulation, and steel framing solutions, setting the standard for excellence in craftsmanship and customer satisfaction.

**STEEL STUD FRAMING | SPRAY FOAM INSULATION | BATT INSULATION
DRYWALL INSTALLATION | TAPING | TEXTURE APPLICATION**



(403) 452 6363 | #200BD - 6424 Street NE Calgary AB T1J 4C8 | alliancedrywall.ca



stile
interiors

Alutec is a global leading building façade manufacture, establishing ourselves as one of the few building envelope companies that are vertically and horizontally integrated in terms of design, manufacturing and contracting. With a streamline approach for glass processing, extruding, anodizing and paint finishing, we control the complete manufacturing process in-house offering standard and custom curtain wall, panelized systems, window wall, doors and much more.

Mississauga

6299 Airport Rd, Mississauga ON, L4V 1N3
T: 647 988 9122

Vancouver

2899 No 3 Rd, Richmond BC, V6X 2B2

THE RISE OF JAPANDI STYLE

The design landscape is shifting towards a thoughtful, restorative living approach, with homeowners seek modern, organic homes that enhance tranquility and productivity, with Japandi interior design—combining Japanese minimalism and Scandinavian functionality—leading the trend

Neutrals: Your Best Friend 1)

Opt for a subtle color palette featuring shades like beige, cream, and white. If you prefer darker hues, consider combining deeper grays, blues, and browns with lighter tones to create a softer, less clinical appearance.

Bring the Outdoors In 2)

Embrace Japandi style, which values imperfections from hand-crafted items. To connect indoor and outdoor spaces, incorporate garden plants into your home.

Free your home of clutter 3)

The Japandi style merges Japanese and Scandinavian minimalism, emphasizing clean lines and open spaces. To achieve this, retain only essentials and eliminate clutter. If overwhelmed, use smart storage solutions like baskets, boxes, and built-in niches to hide excess items. ick functionality over style

Prioritize Functionality Over Style 4)

Aim for a balance by selecting items that are both purposeful and visually appealing. Consider multifunctional furniture, like rugs that serve as throws or cabinets that can double as bar carts for entertaining.

Statement Pieces 5)

Since Japandi is all about being minimal, the elements that you choose will need to stand out to bring the whole style together. Paying homage to craftsmanship is one of the foundations of Japandi, so invest in high-quality and bold furniture pieces that will stand the test of time.



Book demo

YOU CAN'T BUILD THE FUTURE ON A BROKEN FOUNDATION

Why Canada's Contractors Must Fix Their Back Office Before They Can Scale

STORY AISHA ALI | PRESIDENT
PHOTOGRAPHY PREMIER CONSTRUCTION SOFTWARE

There's a question that keeps surfacing in boardrooms from Vancouver to

Halifax, from site trailers in the GTA to high-rise offices in Toronto: **How do we grow?**

How do we take on more projects? How do we expand into new markets? How do we leverage AI, the technology everyone's talking about, to sharpen our bids, tighten our margins, and outpace the competition? These are the right questions, but here's the uncomfortable truth most construction leaders don't want to hear: *None of it matters if your back office is a mess.* You cannot layer Artificial Intelligence on top of a foundation built on disconnected

spreadsheets, siloed software, and financial data that's weeks, sometimes months, out of date. Before Canadian contractors start chasing the next big thing, it's time to have an honest conversation about what's been quietly holding them back all along.

The Dirty Secret Nobody Talks About at Industry Events

Walk into any construction technology panel or trade show, and you'll hear about drones, digital twins, machine learning, and predictive analytics. What you won't hear is this: 96% of data captured in the construction industry goes completely

unused. Not because the data doesn't exist, but because it's trapped in systems that refuse to talk to each other.

Nearly all the data your teams are generating, such as time entries, cost reports, change orders, and field updates, is essentially vanishing into a digital black hole. According to Deloitte, the median construction business operates across 11 different data environments. That's eleven places where information lives, gets duplicated, contradicts itself, and goes stale. It's document management in one tool, project management in another, accounting in a third, payroll somewhere else entirely, and field teams running their

own show on paper or mobile apps that don't connect to anything.

Flying Blind at 100 Kilometres per Hour

Here's a scenario every Owner and CFO in construction knows too well: you've got five projects running simultaneously. You think two are profitable. You hope one is breaking even. And the other two? You honestly won't know until the jobs close out, which could be six months from now. By then, the damage is done. The margins have already eroded. The cash has already been misallocated. The opportunity to course-correct passed weeks ago, and nobody saw it coming because the data wasn't there in real time. This isn't a minor

Continued on page 38



Build a stronger financial foundation.



inconvenience. It's a structural problem. Most construction projects experience cost overruns and poor communication, often a direct byproduct of fragmented systems, which is one of the most common root causes of project failure.

Meanwhile, your people are spending hours every week chasing information across disconnected technologies instead of doing their actual jobs. You're paying skilled Project Managers, estimators, and Accountants to hunt for data instead of acting on it. It's the equivalent of hiring five people and getting only four to work; the fifth is just digging through systems, trying

to piece together a number that should have been at their fingertips from the start.

For a General Contractor running lean, a Developer managing multiple phases, or a Home Builder trying to maintain quality across communities, this isn't sustainable. You're paying for productivity you're not getting, and making decisions based on information that's already outdated by the time it hits your desk.

What "Seeing Everything" Actually Looks Like

Imagine logging in on a Monday morning and seeing the health of every project in

"Not a report someone compiled last Friday. Not an estimate based on last month's numbers. The actual, real-time financial picture of your business."

-Aisha Ali
President

your portfolio. Not a report someone compiled last Friday. Not an estimate based on last month's numbers. The actual, real-time financial picture of your business.

That's what a construction ERP built for the way you actually work is supposed to deliver, and it's exactly what Premier Construction Software was designed to do. Premier isn't a generic business tool that's been shoehorned into construction.

It's a purpose-built, end-to-end platform that brings accounting, job costing, project management, labour cost tracking, field operations, drawing management, and document control into one unified system. One login. One source of truth. Every dollar is tracked from estimate to final billing.

Instead of waiting until month-end or project close-out to discover where you stand financially, you get **real-time**



visibility into every active job. Budget vs. actuals. Forecasted margins. Pending change orders. Overdue items are flagged in red before they become disasters. It's the difference between managing projects reactively and catching problems while there's still time to fix them.

Broccolini, a Canadian Builder and Land Developer, emphasizes that real-time visibility changes how their teams manage risk day-to-day: **"The real-time data in Premier lets us catch red flags as soon as they happen without waiting until month-end or quarter-end, and that's very, very important to us."** — Broccolini



Is your business actually ready for AI?

Start diagnostic



This is about knowing where a job is headed financially, not just where it's been. If costs are trending over budget on a specific phase, you see it now, not in 90 days when the damage is already done.

For Owners and C-suite leaders, this means something powerful: the ability to make strategic decisions based on real-time data, not gut instinct or stale reports. It's not about just looking at money in versus money out; it's about looking at forecasted margins across every job, every division, every region. That's the visibility that enables growth and scale.

Westco Construction, a Design-build Contractor serving Western Canada, has seen firsthand what happens when the back office is no longer a bottleneck:

"In just four years, we've doubled our size with Premier. We're doing much bigger projects, projects that have a couple of extra zeros behind them." — Westco Construction

The Real Cost of Doing Nothing

The temptation is always to wait. Next year. After this project. When things slow down. However, the market isn't giving Canadian contractors that luxury anymore.

The Building Construction Price Index rose 4.2% year-over-year in Q3 2025, driven by climbing costs in structural steel, metal fabrications, and plumbing. Tariffs have added additional pressure on top of costs already significantly higher than pre-pandemic levels; the cost of building low-



Disconnected systems create financial blind spots.



rise housing in the GTA, for example, is now double what it was five years ago reported major negative effects from tariffs on materials sourced from U.S. suppliers, with supply chain disruptions flagged as a "major ongoing risk" heading into 2026.

The companies that will come out ahead aren't necessarily the biggest or the most experienced. They're the ones who can see their numbers in real time, course-correct while there's still time, and make confident decisions in an environment where nothing is certain.

Build Smart. Then Build Big.

The path forward for Canada's General Contractors, Land Developers, and Home

Builders isn't about chasing every shiny new technology that comes along. It's about getting the fundamentals right first.

Premier Construction Software exists for exactly this moment; they are there to help you stop duct-taping disconnected systems together and start running your business from a single platform that was built, from day one, for the way construction operates.

See why contractors like you are making the switch to Premier at premiercs.com.

BOOK DEMO

A SCULPTURAL TOUCH
**THE PIVOINE
 COLLECTION**

A colourful, creative, and versatile design to personalize your own space

SOURCE **V2COM**

PHOTOGRAPHY **LUMINAIRE AUTHENTIK**

This refined series translates the organic elegance of blooming petals into light.

Each piece captures a sense of subtle movement, and almost tangible lightness, through a masterful play of volume and layering.

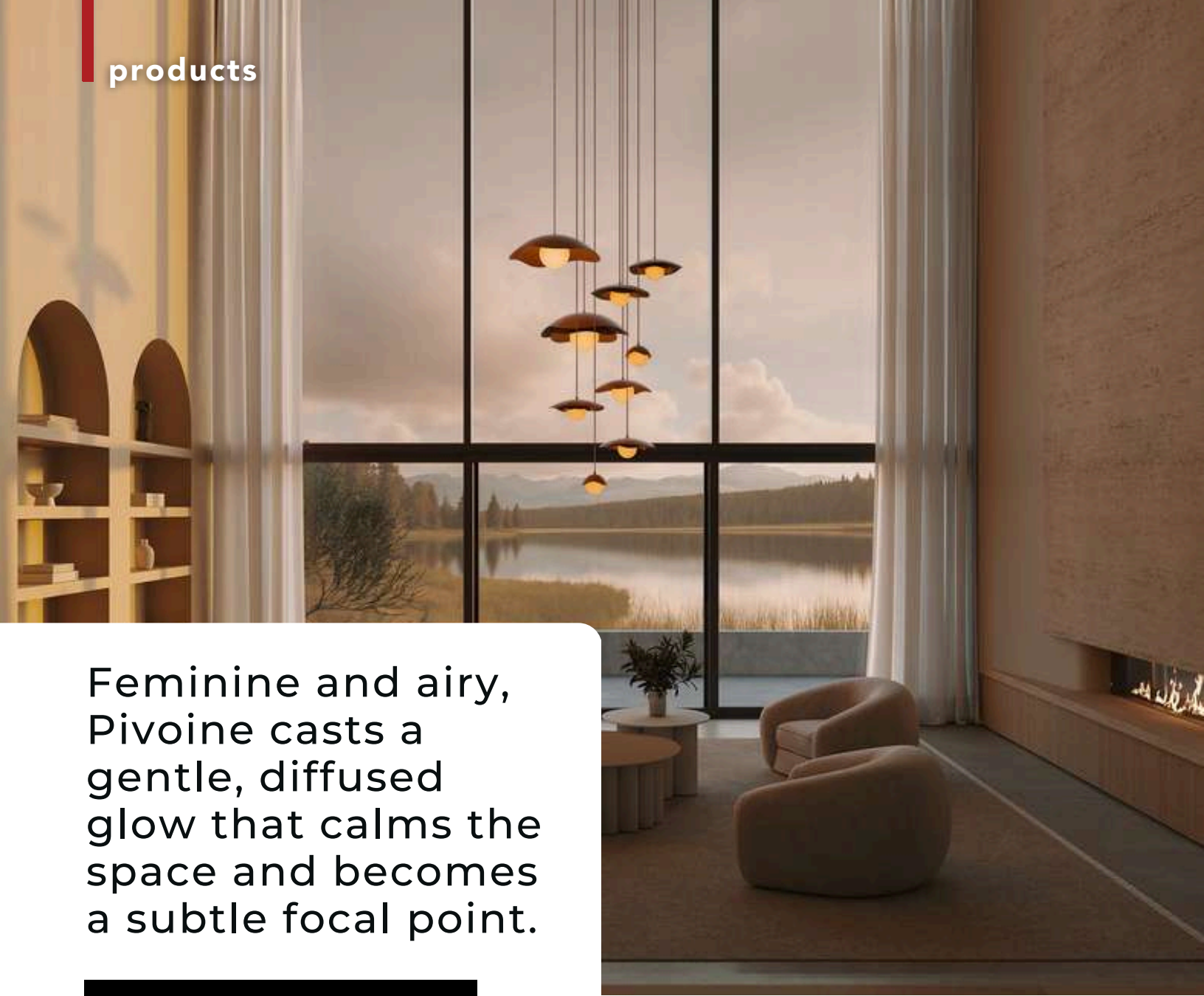
With sculptural forms that are both romantic and pared-down, Pivoine embodies a feminine, airy, and distinctly contemporary aesthetic. Its soft, enveloping lines infuse each space with quiet poetry, calm, and light. Offered in a range of formats — pendants, sconces, and flush mounts — Pivoine is designed to enhance both residential and commercial interiors, creating a warm, refined atmosphere.

Whether showcased on its own or arranged in a cluster, each fixture becomes a delicate visual anchor. The collection was launched on June 17 at their Montreal boutique, in an intimate, floral setting inspired by Pivoine itself.



Pivoine-LA307

Continued on page 44



Feminine and airy, Pivoine casts a gentle, diffused glow that calms the space and becomes a subtle focal point.



Pivoine 307-LA00



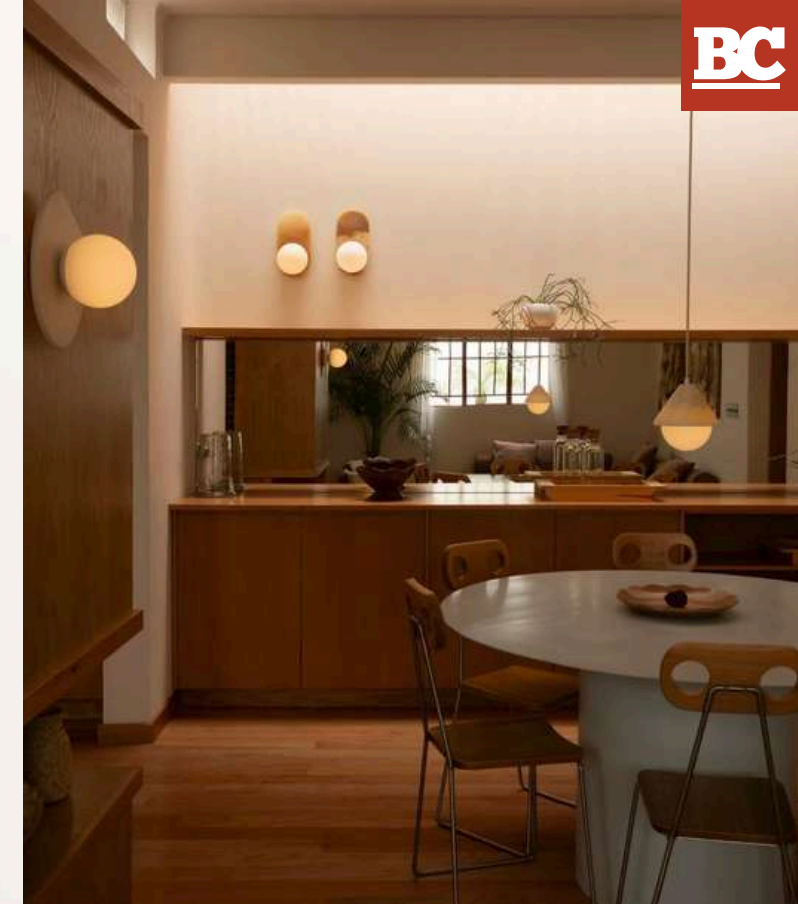
Pivoine 2-2008-LA00



Pivoine 2-2408-LA00



Pivoine 3-2408-LA00



Pivoine expresses a soft, organic elegance through light. Each piece brings together the delicacy of petals and the strength of metal, creating a refined balance between lightness and structure.

Feminine and airy, Pivoine casts a gentle, diffused glow that calms the space and becomes a subtle focal point, whether used alone or in composition, in residential or commercial interiors. ♦

[Shop The Pivoine Collection](#)

Company Luminaire Authentik

Location Montreal, Quebec

Website luminaireauthentik.com



SUSTAINABLE CONCRETE BRICKS FOR CARBON NEUTRALITY

The construction sector generates almost 40% of carbon emissions worldwide

SOURCE **V2COM**
PHOTOGRAPHY **NEUF architect(e)s**

Working toward solving this challenge of lowering greenhouse gases in buildings requires cooperation across disciplines, where it is rare for architects to work directly with manufacturers who develop sustainable products that can be tested by builders to ensure its easy adoption.

NEUF architect(e)s represents one of the few firms taking a significant step in bringing the construction industry toward carbon neutrality by launching DUAL, an

concrete brick marking the first research-action partnership to from its Sustainable Strategies department. This product brings together two of Eastern Canada’s most prominent companies in construction:

Webster — which specializes in masonry distribution, and Permacon — the country’s largest manufacturer of concrete products. Available now, DUAL represents a significant advancement in sustainable construction.

“In this partnership, our role was to ensure that a product responds to all end-use needs, while aiming to reduce carbon emissions by 20%,” explains Hugo Gagnon, Partner Architect and Sustainability Manager at NEUF. “I played the part of the mason who wants ease of product handling, the developer who must respond to market demands, and the municipalities who demand both quality and heritage conservation. Of course, I also had to take on the role of an architect looking to express their concepts. This

approach is essential for innovative practices to emerge.” The partnership was created in 2022 to quickly solve the problem of reducing their individual environmental footprints within the construction sector.

Designing a new approach to bricks is a tangible outcome of their shared commitment to developing an environmentally and socially sensitive product that is economically competitive with a universal design for everyone — architects, developers, entrepreneurs,

LEFT: Lucas Vallon, President Permacon and Hugo Gagnon, Partner Architect and Sustainability Manager at NEUF (from left to right).
Photo Credit: Virginie Gosselin
THIS PAGE: DUAL concrete brick prototype, Metric Norman format, Zurich colour

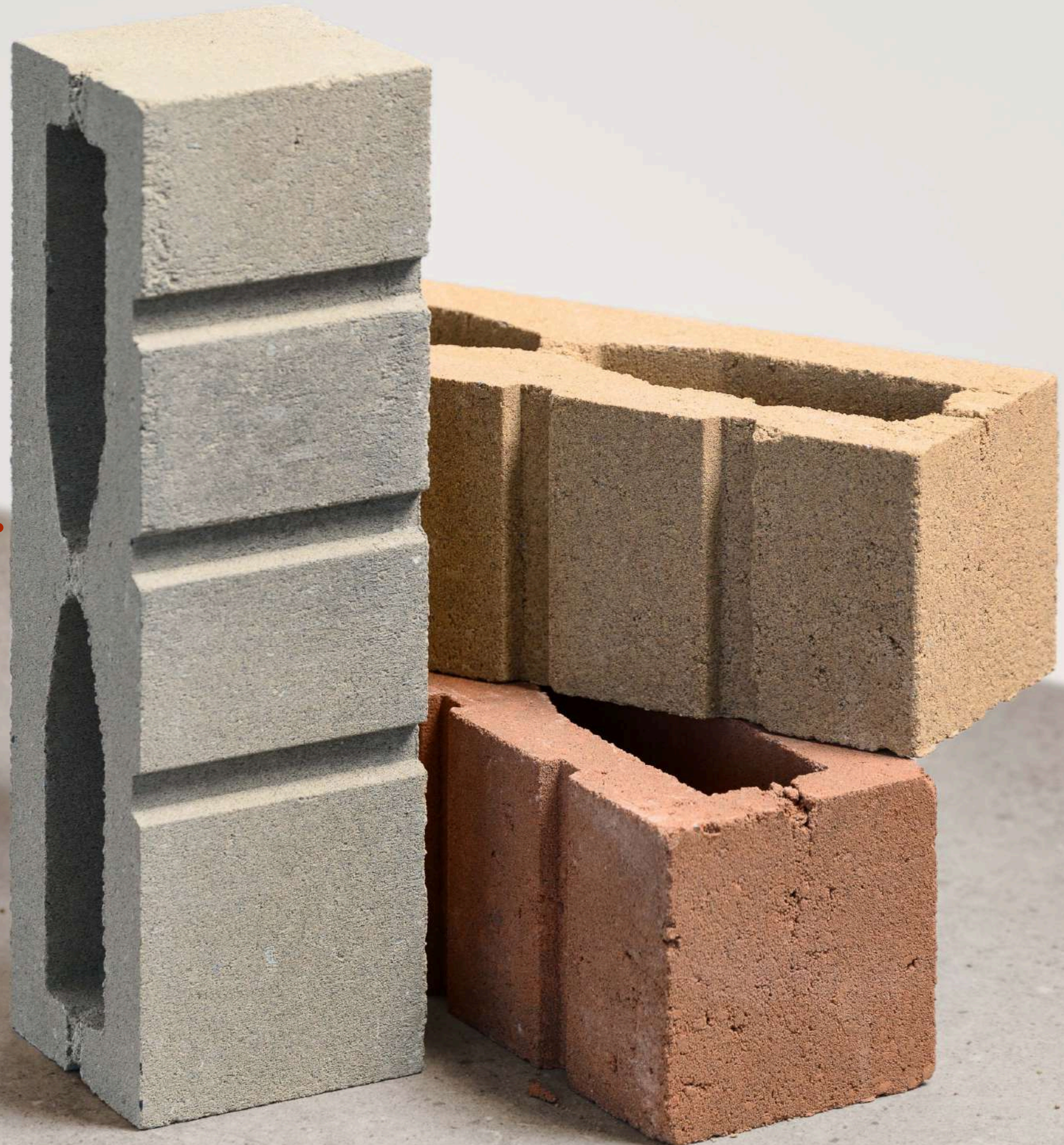
and decision-makers. After two years of research in Permacon's newest plant in Anjou, the DUAL concrete brick product range is market-ready. Product experts have optimized its composition and physical properties to maximize future.

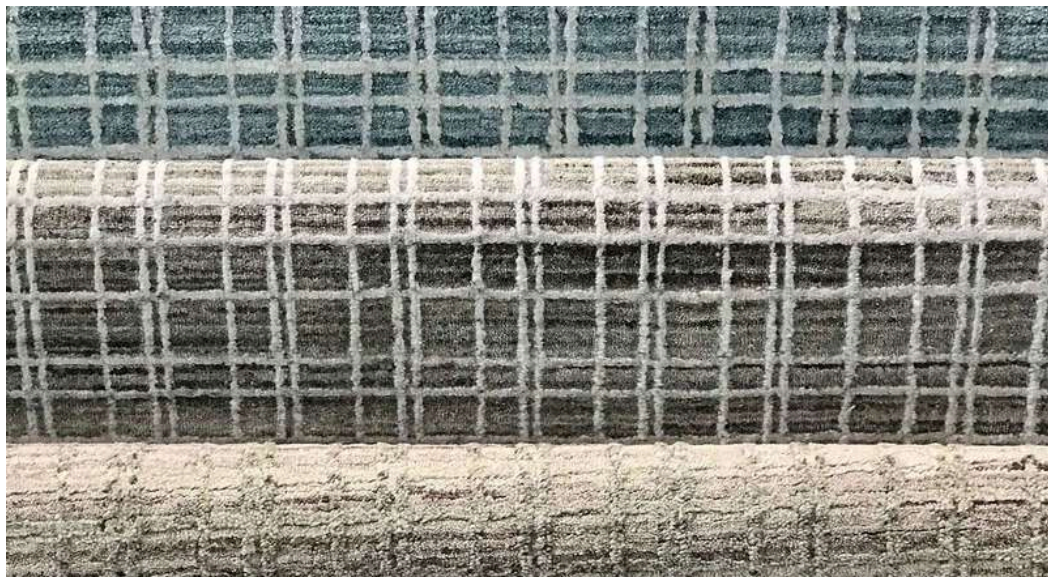
"Webster supports the architecture performance and sustainability. Studies are underway to reduce the carbon footprint of the next generation of concrete products, reinforcing the three partners' commitment to a sustainable community with concrete solutions that offer more design possibilities and provide future-focused environmental responsibility," notes William Webster, President of Webster & Sons.

DUAL Concrete brick, Metric Jumbo format,
Petra / Belfast / Zurich colours

"With more than a hundred years of collaborating with masonry companies, we understand the importance of designing materials that facilitate use and productivity. Through its unique aesthetic and innovative approach to sustainability, the new DUAL concrete brick completely reflects the mission and vision of Webster & Sons."

The DUAL concrete brick reduces the amount of materials used by almost a third compared to traditional concrete, thanks to innovative honeycombing in its design. It conforms to CSA standards for concrete masonry, and it comes with a certified Environmental Product Declaration (EPD) indicating a reduction of more than 20% in life-cycle carbon emissions, primarily attributed to including recycled materials in its composition. ◆





Tapis National stands out for its quality, style and design.

A trusted name in the floor covering industry for over 60 years. An endless selection of residential and commercial flooring products for your decorating needs.



LESLIEVILLE LOFT DOLLHOUSE

The design balances the building's industrial roots with the warmth of contemporary interventions

SOURCE **V2COM**

PHOTOGRAPHY **MAXIME BROUILLET**

Once a toy and bottling factory throughout the 1900s, the building became live/work lofts in the early 2000s. As time wore down the quality of finishes and fixtures, a new opportunity emerged to rework the loft's spatial dynamics.

Entering the unit reveals expansive proportions that immediately command attention. A moment of compression at the threshold gives way to a soaring double-height volume, illuminated by four generous skylights and a pair of south-facing windows. This interplay of compression and release posed the core

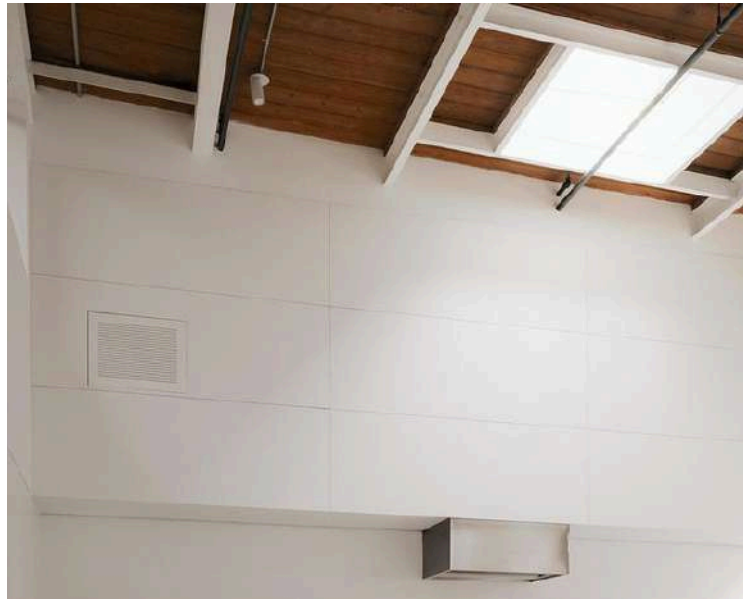
design challenge: how to honour the openness of the loft while introducing elements that define more intimate, social zones – without compromising spatial clarity.

A custom platform both delineates the living area from the adjoining kitchen and dining zones and introduces new social configurations. The platform evokes both a Japanese Engawa – a transitional space – and a Greek Agora – a social center and gathering place. These references emerged as the design direction evolved. Here, the platform carves out a quiet

Continued on page 54

residential architecture

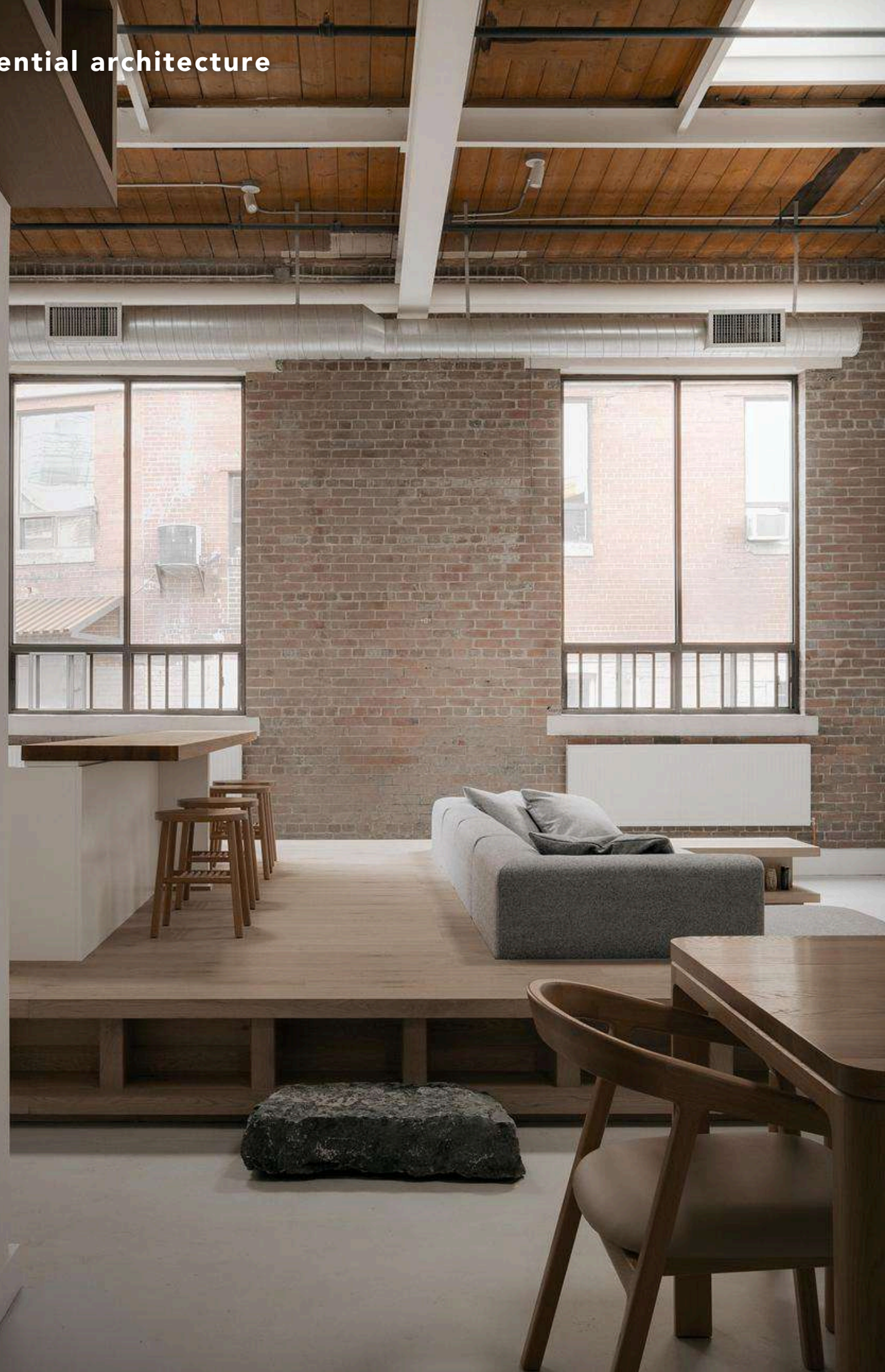
enclave for rest, while linking visually and physically to the kitchen through an elevated surface integrated with the island. On the upper level, a bath pod acts as both a spatial divider



between the primary bedroom and ensuite and as a vessel for a secluded soaker tub and shower. Integrated open shelving houses the owner's extensive library, while softly partitioning the loft office from the rest of the mezzanine. The design balances the building's industrial roots with the warmth of contemporary interventions. Corrugated metal cladding on the bath pod recalls the building's

Continued on page 56







original industrial vocabulary, while white oak and concrete-toned stone bring harmony to the raw textures of exposed brick and timber ceilings.

About StudioAC

Studio for Architecture & Collaboration (StudioAC) is an interdisciplinary architectural practice based in Toronto, led by Andrew Hill and Jennifer Kudlats. The practice was founded in 2015 and has since received numerous accolades, appearing in a number of publications internationally including Azure Magazine’s list of 30 Canadian Architecture Firms Breaking New Ground. In 2019, StudioAC was named Canada’s Best Emerging Designer by the Design Exchange and, in 2021, the practice was selected by 20+Change and Canadian Architect as one of 20 firms across Canada recognized for the approach to practice and strength of projects. In 2023, StudioAC was named Designer of the Year by Designlines Magazine.



The kitchen island flows directly from an elevated platform, serving as both a divider and, function kitchen area.

Every project is approached with care and passion, and working with clients and consultants to craft a working relationship that will cultivate an environment that sparks inspiration is critical. During this process, StudioAC strives to find an ideological thread that can be fed through a project, giving meaning to decisions along the way. ♦



Architect StudioAC
Builder AT Build
Structural Honeycomb
Location Toronto, Canada

SHOEBOX IN MONTREAL

Located in Montreal's Petit Laurier neighbourhood, ShoeBox reimagines a house for contemporary family living

SOURCE **V2COM**

PHOTOGRAPHY **MAXIME BROUILLET**

The project introduces a recessed stainless steel addition, using light, proportion, and material restraint to extend the existing structure without altering its modest presence on the street. The original volume and front façade were preserved, maintaining continuity with the surrounding urban fabric.

Set back from the street and aligned with the neighbouring context, the new upper level is clad in satin-finished stainless steel, selected for its reflective qualities and subdued expression. The addition reads as a quiet intervention—distinct yet complementary to the existing house. Natural light organizes the interior. A central stair topped by a skylight brings daylight into the plan, while openings at the rear connect the living spaces to the garden and terrace.

Continued on page 62



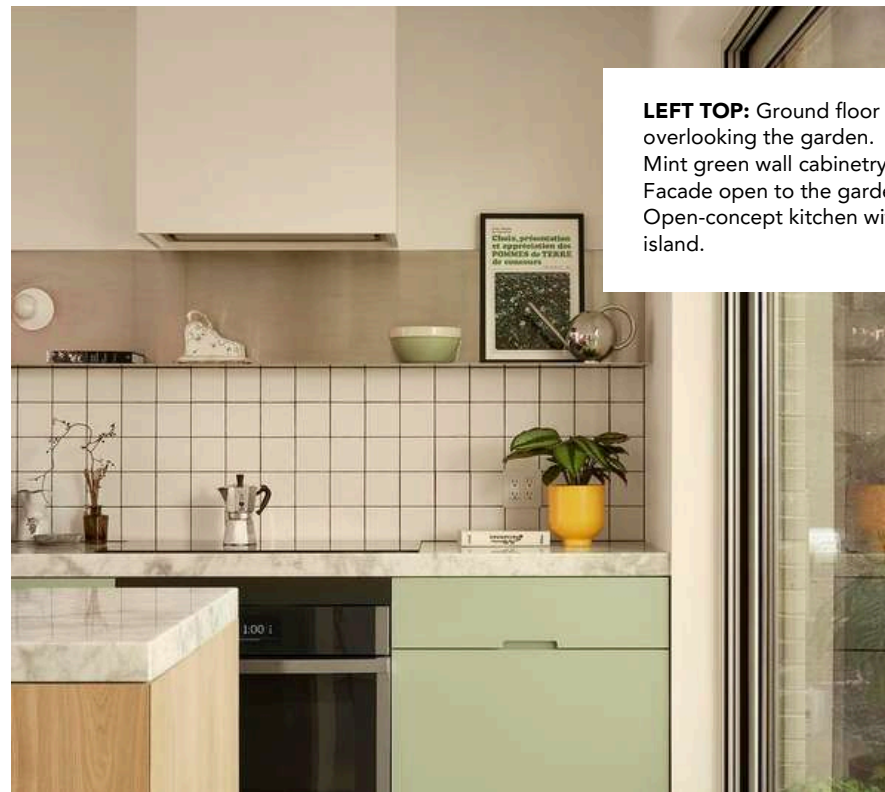
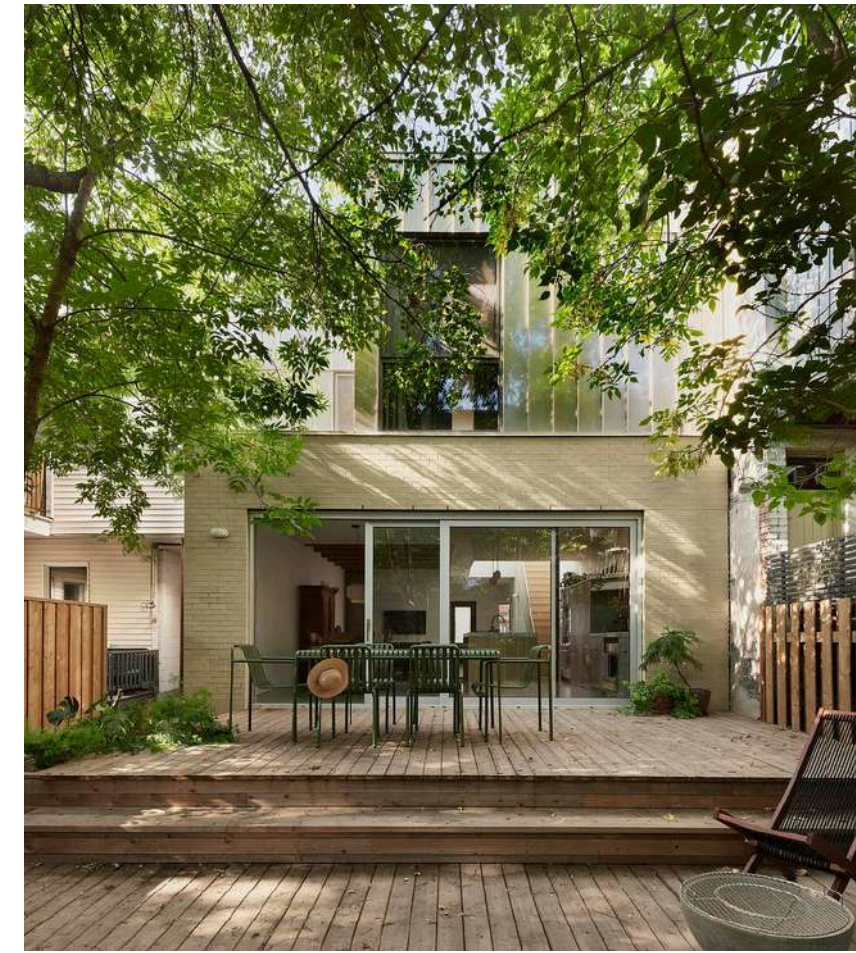


Despite limited footprint and challenging orientation, the project prioritizes spatial clarity, fluid circulation, and visual continuity.

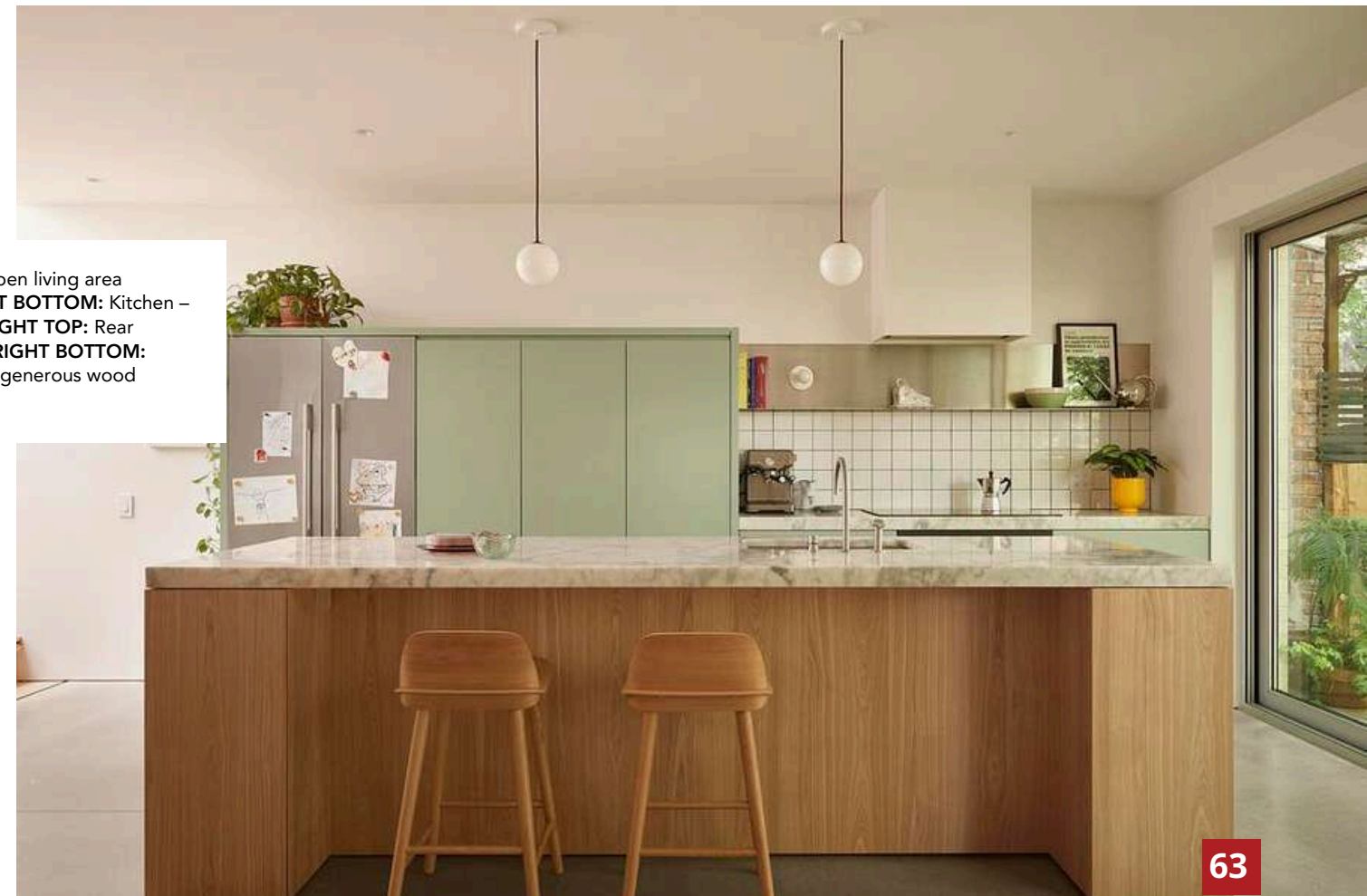
Interior finishes are restrained and tactile - light wood, polished concrete, and white surfaces - allowing light and everyday life to animate the spaces. Vegetation, both framed and integrated, softens the architecture and reinforces the indoor-outdoor relationship.

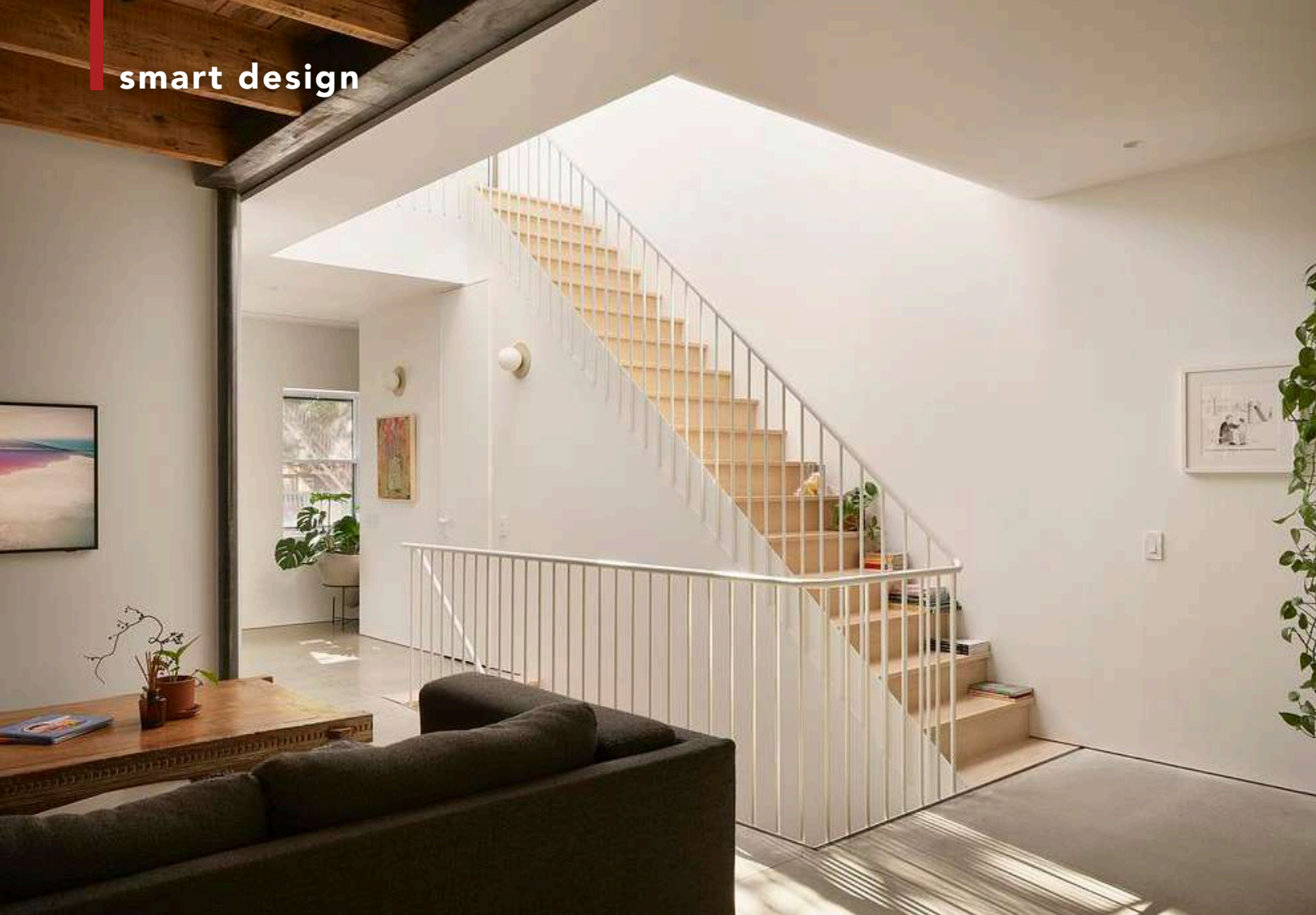
ShoeBox CHB proposes an approach to residential expansion defined by discretion, contextual awareness, and durability, demonstrating how modest typologies can be carefully transformed to meet contemporary needs.

Continued on page 64



LEFT TOP: Ground floor | Open living area overlooking the garden. **LEFT BOTTOM:** Kitchen – Mint green wall cabinetry. **RIGHT TOP:** Rear Facade open to the garden. **RIGHT BOTTOM:** Open-concept kitchen with a generous wood island.

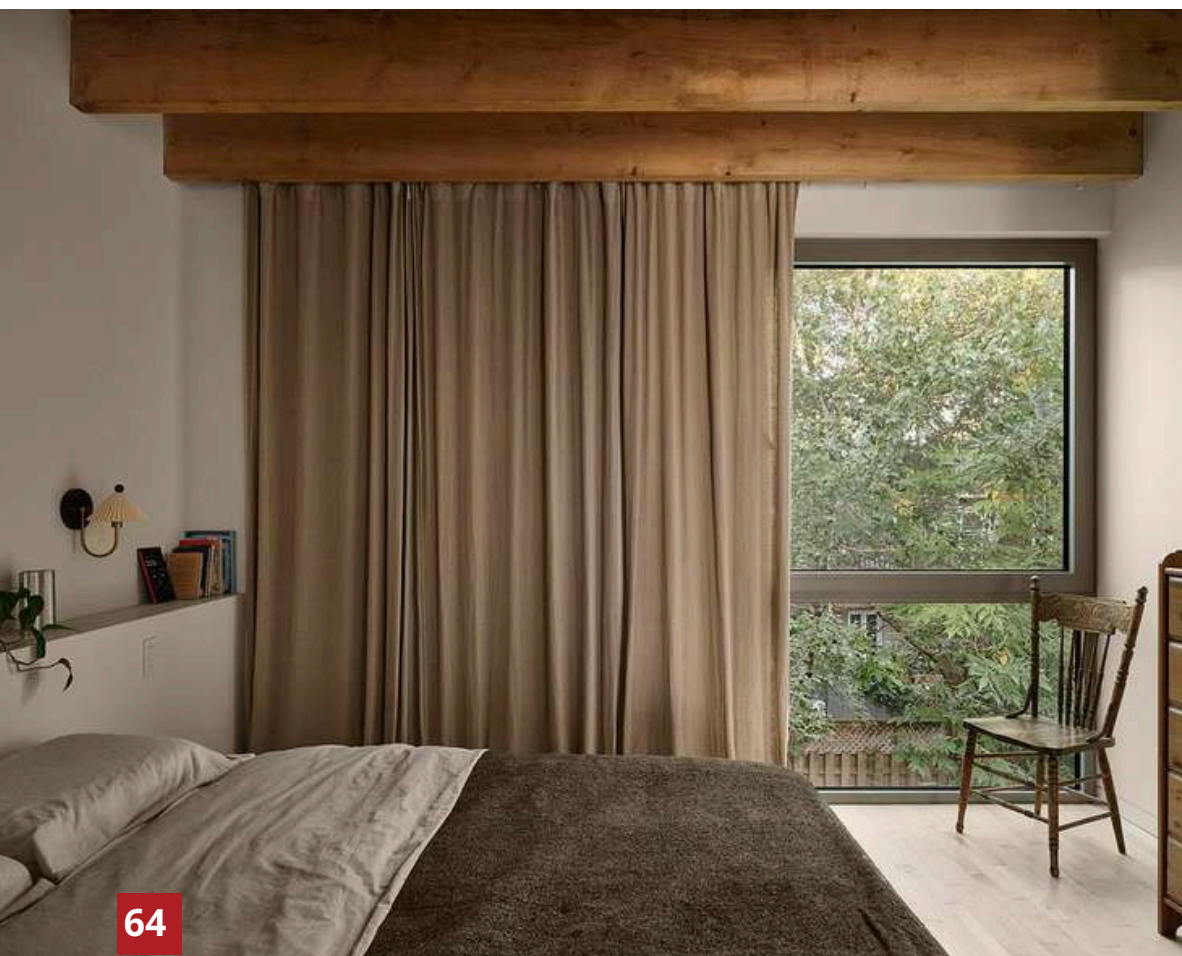




About ALEXANDRE BERNIER ARCHITECTE

ALEXANDRE BERNIER ARCHITECTE is a design studio based in Montreal whose work explores the intersections between architecture, interior design, furniture, and landscape, seeking a balance between function, materiality, and form.

The studio's projects are approached with particular attention to materiality, light, temporality, and sensory experience. The studio favors a refined contemporary aesthetic rooted in context and artisanal craftsmanship. Its design process relies on a careful reading of the context and a commitment to creating durable, sensitive, and meaningful objects and spaces. ♦



LEFT TOP: Ground Floor – Main Living Area.
LEFT BOTTOM: Main bedroom. **LEFT CENTER:** Minimalist bathroom in mineral finish.
TOP RIGHT: Sculptural double-height staircase.
RIGHT BOTTOM: Skylight above the Double-Height Space and staircase.

IMPROVING WORKER SAFETY THROUGH ROBOTICS

Will AI drones, robots, and wearable sensors transform workplace safety?

With the construction industry being one of the most dangerous sectors in Canada, it is vital to always advance technology to protect workers, improve productivity, and reserve the use of repetitive heavy work. To address these metrics, robotics can aid with the dangerous repetitive motions onsite and in certain tasks, replace the human operator completely. Here, we share how using robots and drone technology in construction can enhance safety and create safer work environments for construction teams.

Continued on page 44

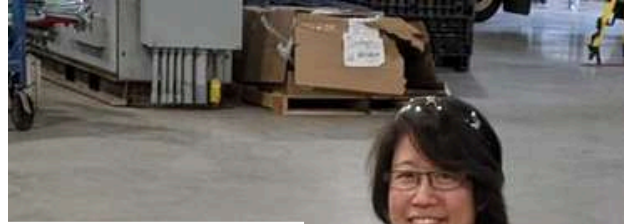


CANVAS ROBOTICS

Canvas has developed a robotic system handling one of the most labor-intensive trades in construction: drywall finishing. Leveraging robotic arms from Universal Robots, Canvas has built a machine that reduces the usual five to seven days of spraying and sanding the drywall to just around two days for both Level 4 and Level 5 finishes.

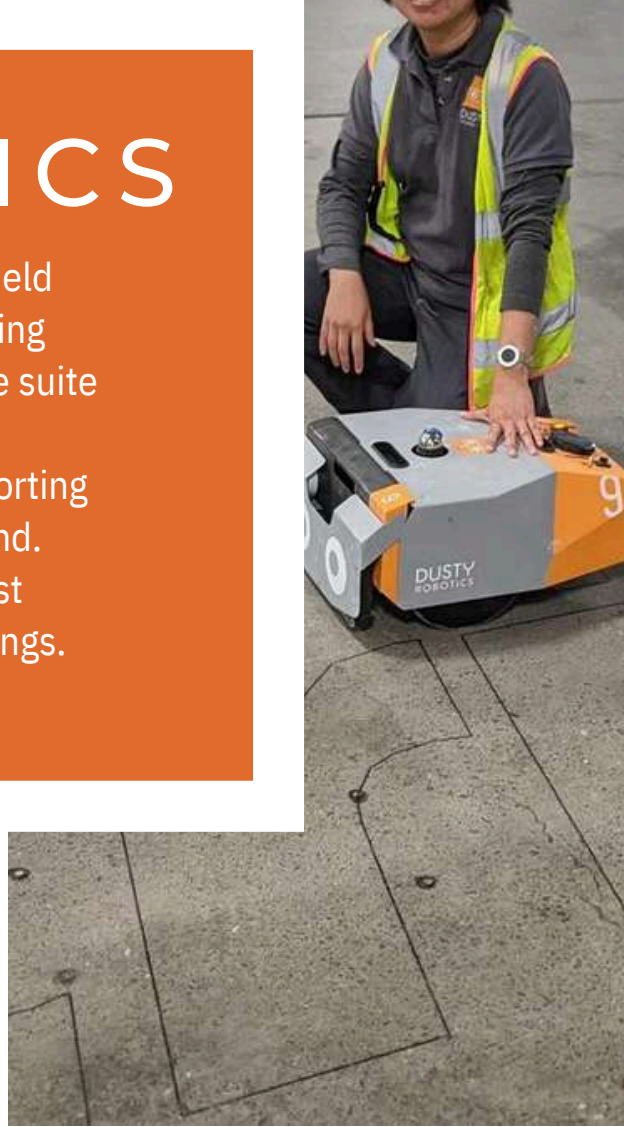
[MORE INFORMATION](#)





DUSTY ROBOTICS

Print digital models directly on the jobsite floor. Align field teams to design intent, reduce rework, and finish building sooner. The FieldPrint Platform offers a comprehensive suite of tools that empowers general contractors and trade partners to optimize their BIM-to-field workflow, supporting the entire journey from design to installation and beyond. This includes a Revit plug-in designed to automate most manual steps required for preparing robot-ready drawings. [MORE INFORMATION](#)



WINGTRAONE

WingtraOne GEN II delivers consistent, professional survey results with high-end sensors and built-in PPK GNSS. That means fewer re-flights and faster project turnaround. Fewer flights and relocations mean faster surveys and quicker project delivery. And its faster setup gets you back in the air without delays between projects. WingtraOne fits into your existing drone workflow—no need to change your software, base stations, or data formats. [MORE INFORMATION](#)



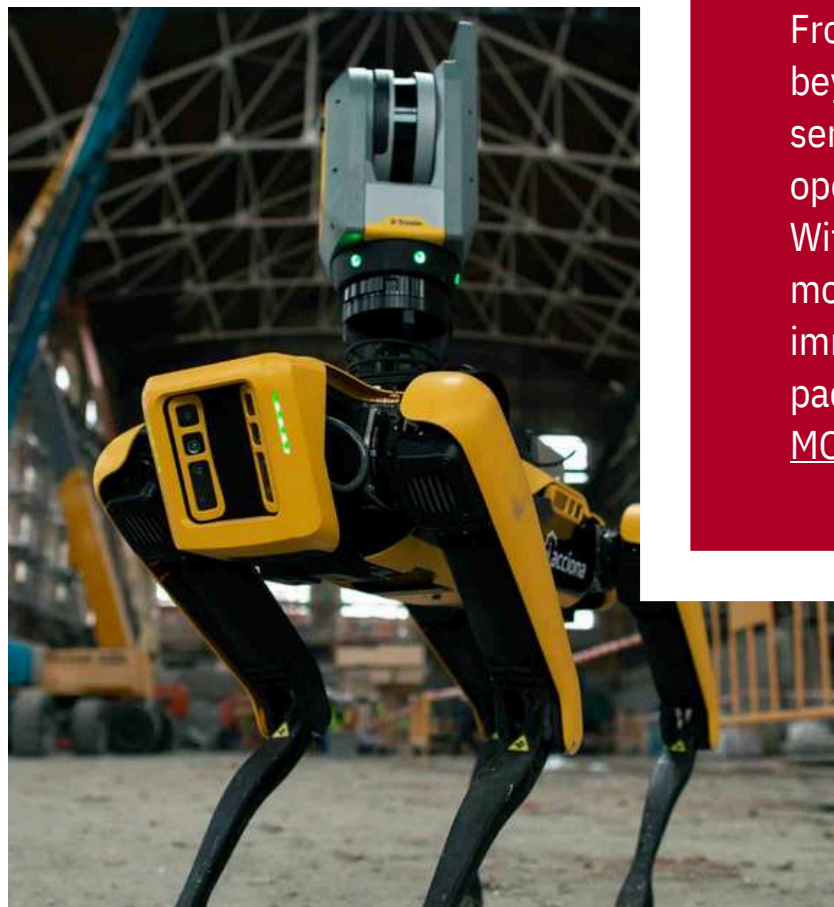
BUILT ROBOTICS

With installation of Built Robotics' Exosystem, excavators can be transformed into fully autonomous trenching robots. Built's Exosystem transforms excavators into fully autonomous robots. The Exosystem can be installed within hours on a variety of machines from most major manufacturers, while still maintaining complete manual control. Current solutions include fully autonomous excavators used to dig trench in energy and infrastructure projects. [MORE INFORMATION](#)



SPOT®

From factory floors to construction sites to research labs and beyond, Spot works so your team can excel. As a dynamic sensing platform, Spot provides valuable insights into routine operations, site health, or potentially hazardous situations. With Spot, your team can focus on the things that matter most, while staying out of harm's way. You can generate immediate value for your organization with pre-configured packages for inspection, research, and hazardous response. [MORE INFORMATION](#)

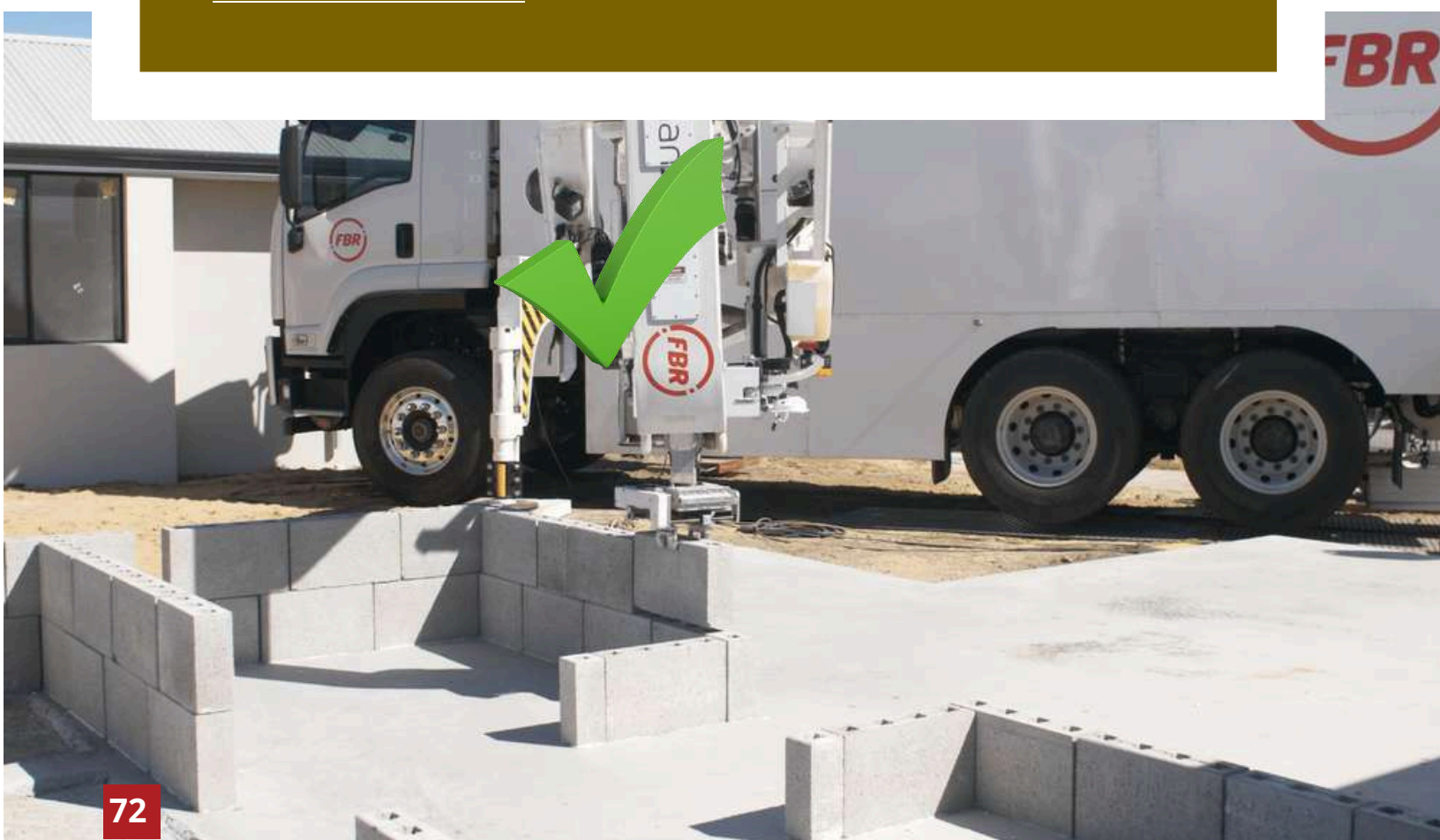




FASTBRICK ROBOTICS

Fastbrick Robotics: Innovating Construction. Fastbrick Robotics, located in Perth, is a pioneering robotics company that developed Hadrian X, the world's first fully automated bricklaying robot. This remarkable machine is mounted on a truck, allowing it to drive directly to construction sites and lay bricks efficiently. It can reach a maximum height of 3.6 meters. The automation aims to reduce construction costs while upholding the highest safety standards.

[MORE INFORMATION](#)



THE BROKK 130+

The Brokk 130+ sets a new benchmark in demolition, delivering more power, endurance, and efficiency than ever before. With a 360-degree working radius, it ensures maximum flexibility in any operation. Equipped with the BHB 175 breaker and the advanced Brokk SmartPower+ system, the Brokk 130+ maximizes efficiency for superior demolition performance.

[MORE INFORMATION](#)





KOMATSU

Komatsu America Corp. introduced the new PC210LCi-11, intelligent Machine Control hydraulic excavator. This second generation PC210LCi leverages the proven track record and success of the pioneering PC210LCi-10, while adding eagerly-awaited, machine-control-joystick functionality. Intelligent Guidance: Advanced features such as facing angle compass and minimum distance bucket control are delivered in a simple and intuitive manner, with a class-leading 12.1" touchscreen display. [MORE INFORMATION](#)

FISCHER GROUP

Fischer and BauBot GmbH launched the BauBot construction robot in 2022. In combination with a digital construction plan, the robot enables fully automated drilling, cleaning and marking of drill holes in walls, floors and ceilings, as well as the future installation of fischer fastening solutions. It is said to increase efficiency, relieves workers of physically strenuous, stressful tasks, reduces the risk of injury to employees, lowers error rates, saves costs, accelerates construction progress and ultimately increases the success of the project.

[MORE INFORMATION](#)





TOBII GLASSES X

Tobii Pro Glasses 3 is an advanced wearable eye tracker built for research which helps you study behavior where it naturally occurs. Capture detailed eye tracking data in real time with scientific-grade precision. Take your research beyond controlled environments and into the real world. Tobii Pro Glasses 3 lets participants act naturally while you collect highly detailed, first-person eye tracking data—live, and without interference.

[MORE INFORMATION](#)



BETWEEN PAST, MODERNITY, AND MOBILITY

900 SAINT-JACQUES

A Contextually Anchored Residential Tower

SOURCE **V2COM**

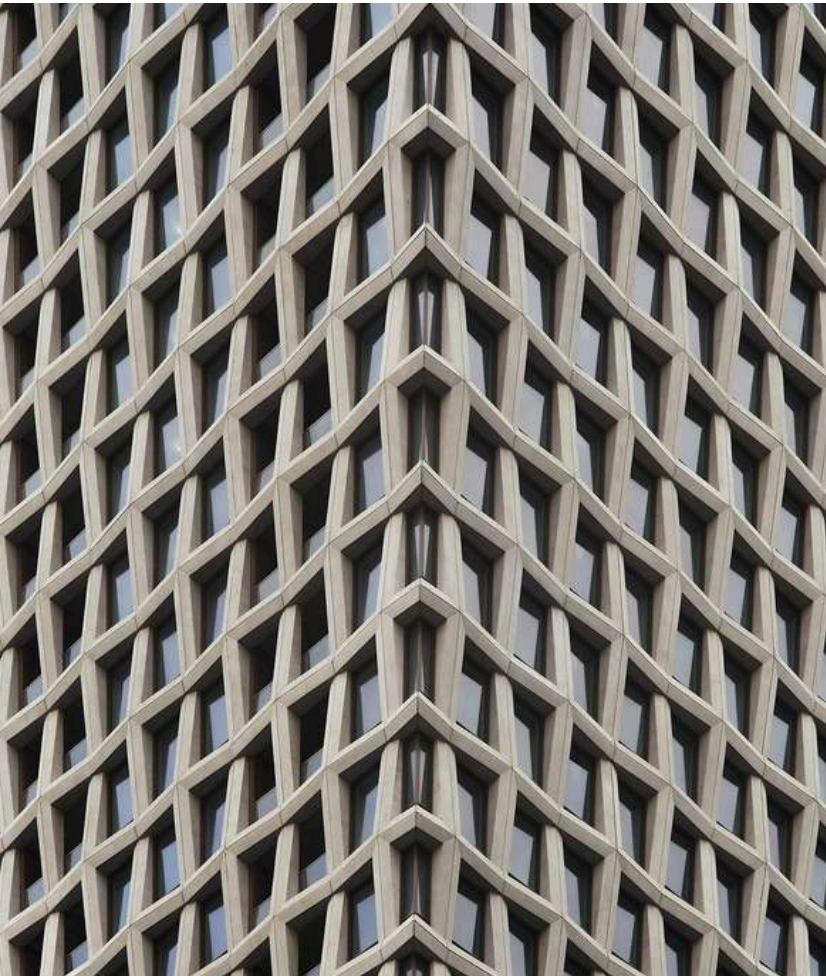
PHOTOGRAPHY **MAXIME BROUILLET**

At the heart of the Quartier des Gares, the 900 Saint-Jacques tower offers a contextually sensitive response to contemporary challenges of high-density urban living. Built on a site historically perceived as residual space at the edge of the downtown core, the 63-storey tower establishes a cohesive and liveable microcosm within an infrastructural landscape shaped by rail corridors and the Ville-Marie Expressway.

The mixed-use program includes four levels of underground parking, a 12-storey Moxy hotel, approximately 700 rental residential units distributed across 48 storeys, and a series of shared amenities and social spaces. As Montreal continues to negotiate the intersection of its built heritage, 900 Saint-Jacques exemplifies how vertical residential development engages meaningfully with the city's past, present infrastructure, and evolving urban lifestyles.

Continued on page 80





The tower's mineral envelope reinterprets Montreal's architectural heritage, echoing the material grain of Old Montreal, Place Ville-Marie, the Sun Life Building, and the Olympic Park, among others. Composed by a series of sculpted precast concrete panels evoking interwoven threads and cruciform patterns, emblematic of the city, the tower stands out in a skyline dominated by glass.

Despite its size, the articulation of the envelope conveys a sense of lightness to the building, while solar orientation reveals variations in relief across the façade. Strategically positioned transparent volumes introduce moments of openness, revealing the social activity within and reinforcing the building's connection to the public realm.

Continued on page 82



Architect Chevalier Morales and Brian Elsdon Burrows

Interior Design DesignAgency, Hager Design

Photography Maxime Brouillet

Location Montréal, Québec



Recipient of a 2025 Canadian Architect Awards of Excellence, 900 Saint-Jacques is recognized for its architectural quality and technical mastery, particularly in its innovative application of precast concrete. In contrast to the predominance of glass residential towers, and the project asserts a contemporary identity in dialogue with Montreal's mineral material culture.

The envelope is generated through the repetition and recombination of a limited number of a limited number of

prefabricated panel modules, detailed to blur the boundaries between different façade elements. The use of false joints, open corner panels, and geometries extending beyond module limits enhances a sense of continuity across the surface, producing a textile-like expression that departs from the traditional language of concrete panel construction.

Continued on page 84

The building's massing is articulated into three distinct strata: a transparent base, a planted podium, and a crowned tower. Each layer corresponds to a different urban scale and is paired with a corresponding green space.

At ground level, a highly transparent envelope activates the public realm and supports a garden connected to the restaurant terrace and adjacent cycling infrastructure, contributing to the greening objectives outlined in the Quartier des Gares PPU.

The project's advanced electromechanical systems and high-performance envelope exceed baseline standards and comply with LEED certification principles.



The podium level features textured concrete panels and landscaped terraces forming a suspended garden, establishing a perceptible transition between the street and the tower above. At the summit, a rooftop green space is framed by oversized façade openings, offering panoramic views toward Mount Royal and reinforcing the building's vertical dialogue with Montreal's topography.

The project's architectural and programmatic strategy places collective life at the heart of the residential concept. A generous network of shared amenities is distributed throughout the building to foster social interaction and



to support a diverse range of daily activities accessible to both residents and hotel guests. Terraces, gardens, a restaurant, community spaces, a shared kitchen, coworking areas, and relaxation zones extend the residential units by offering a wide range of activities, both day and night. The extension of private areas aims to redefine vertical living as a socially connected and experience-driven form of urban living.

The project's sustainability strategy addresses both environmental and social

considerations. The high-performance envelope, in combination with advanced electromechanical systems, exceeds baseline standards and aligns with principles found in LEED-type certification frameworks.

With window-to-wall ratios, use of local materials, water-efficiency measures, and high-efficiency lighting reduces the environmental footprint. The precast concrete envelope improves winter performance by approx. 25%.

Continued on page 86



Socially, 900 Saint-Jacques prioritizes the diversity of household types and long-term livability. The residential mix includes an enhanced proportion of family-sized units, with a significant offering of three-bedroom and flexible layouts adaptable to evolving needs. Smaller units, inspired by the principles of compact living, provide more accessible entry points to downtown housing, offset by the quality and abundance of integrated shared spaces.

About Chevalier Morales

Chevalier Morales is a Montreal-based architecture and design firm founded in 2005, operating on both provincial and national levels. The firm embraces a contemporary vision of architecture that carries social and environmental responsibility, while ensuring a profound connection to the surrounding context. Chevalier Morales has a diverse portfolio that primarily focuses on culture, higher education, workspaces, and both social and private housing.

With a talented team of approximately fifty collaborators, Chevalier Morales undertakes an average of forty projects annually, united by a shared commitment to addressing the challenges of the present and shaping the built environment of the future. The firm has since established itself as a key player in the Canadian architectural landscape. ◆



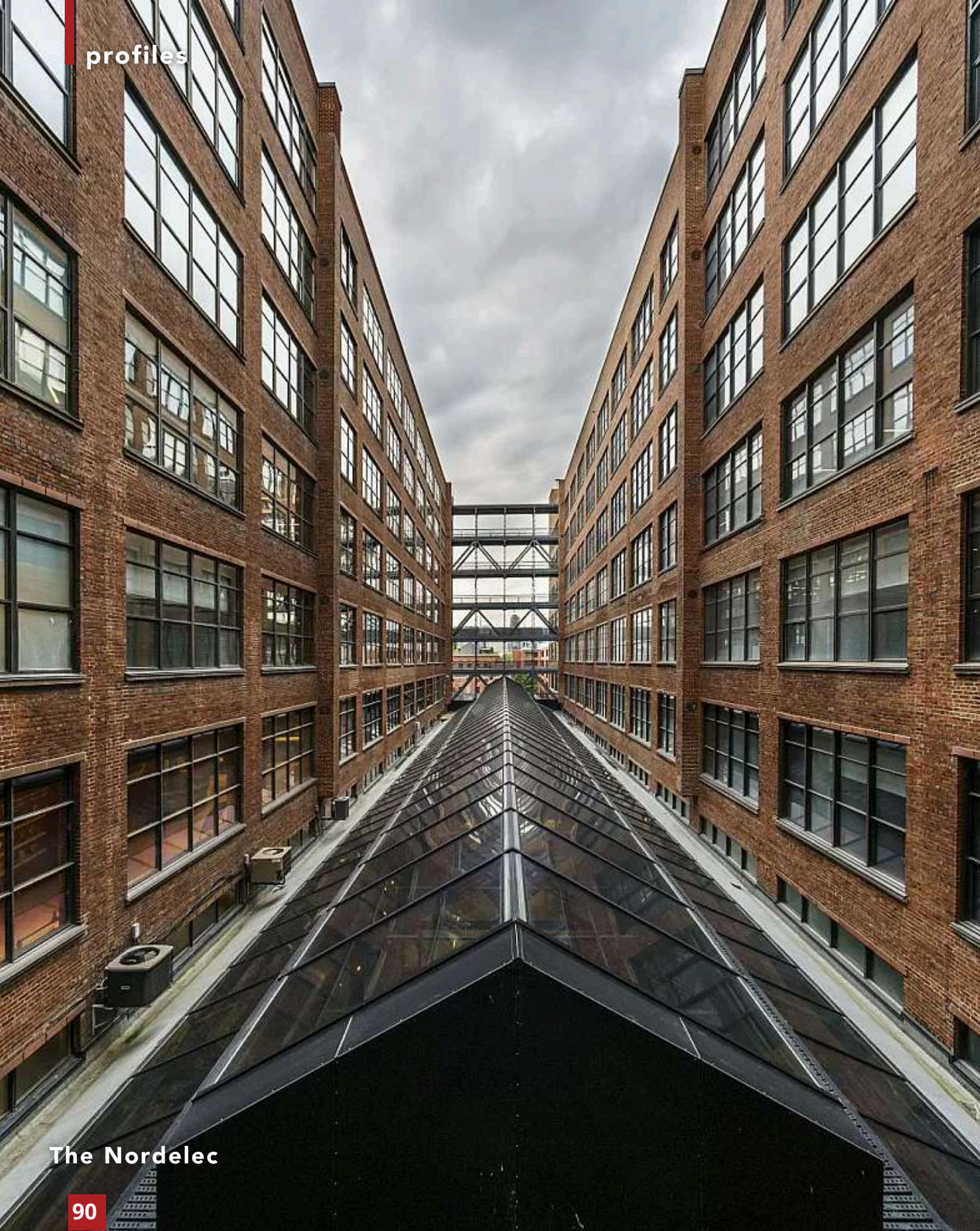
Environmental Site Assessment & Risk Assessment.



With thousands of projects to our resumé, our work has included everything from collecting scientific baseline data, developing and submitting environmental assessment and permit applications, to site remediation, regulator management, restoration and construction monitoring.

**REAL ESTATE | ENERGY | TRANSPORTATION | MINING |
GOVERNMENT | FIRST NATIONS | LEGAL | MANUFACTURING
FINANCIAL | FORESTRY | HYDROGEOLOGY**





JCB CONSTRUCTION SHAPING OUR COMMUNITIES

How JCB Construction Canada Delivers Effective Building Solutions

STORY BUILD CANADA

PHOTOGRAPHY JCB CONSTRUCTION CANADA



At the 41st edition of the Gala Excellence de la Rive-Sud, Alexandre-Stéphane Boucher, President/General Manager of JCB Construction Canada, was awarded the “Inspiring Young Leader” prize by the Chambre de commerce et d’industrie de la Rive-Sud (CCIRS).

JCB Construction Canada is versatile and experienced in providing a diverse range of services in various sectors in sectors in Montreal and Toronto. The company’s work has varied in scale, complexity, and value, but their standard of quality and customer service has always stayed the same. President Alexandre-Stéphane Boucher takes a deep dive into the company’s core beliefs and principles that guide their planning, execution, and final realization of each project.

BC: An efficient team is crucial for delivering successful projects. How does the JCB team cultivate and strengthen a company culture that embodies a high-performance environment?

Continued on page 92



“Our high-performance culture begins with people. By combining accountability with recognition, we create a culture where individuals thrive, teams excel, and projects consistently deliver quality and efficiency.”

—Alexandre-Stéphane Boucher on what makes JCB Construction Canada different.

The Nordelec

ASB: For over 40 years, JCB has focused not only on building infrastructures but also on building lasting relationships. Our high-performance culture begins with people. We invest in attracting, developing, and retaining top talent while fostering an environment where initiative and expertise are encouraged. Open communication and collaboration ensure that everyone feels empowered to contribute solutions. Through our internal academy, we offer training, mentorship, and career development that strengthen both technical and leadership skills. We also prioritize employee well-

being, knowing balance fuels long-term performance. By combining accountability with recognition, we create a culture where individuals thrive, teams excel, and projects consistently deliver quality and efficiency.

BC: JCBs’ services are divided into three main delivery methods that meet project expectations. In your opinion, what is the best approach or execution strategy that impacts the level of success of your projects, and why?

ASB: While JCB excels in fixed-price and design-build methods, our greatest impact often comes from the construction management approach. This strategy allows us to engage early with clients, architects, and engineers, creating a collaborative framework where risks are identified and mitigated proactively. By fostering open communication from the outset, we align project goals with realistic budgets and timelines, minimizing surprises along the way. Construction management also enables us to leverage

value engineering, innovative materials, and sustainable practices tailored to each client’s priorities. Beyond efficiency, this approach nurtures trust—an essential factor in high-stakes projects. Success, in our view, is not only measured in structures delivered but in relationships strengthened.

BC: JCB has completed more than 30 LEED and Carbon Neutral certified projects. What innovative products or practices does JCB stand by that reduce your ecological footprint, while enhancing energy efficiency?

Continued on page 94

ASB: Sustainability is woven into everything we do—from our offices to our worksites. Guided by our Environmental Committee, we extend eco-responsibility across internal operations, construction sites, and projects. JCB implements practices such as life-cycle cost analysis, high-performance building envelopes, and comprehensive materials recovery—reusing quality materials, recycling others, and repurposing salvageable items for charitable organizations. We also partner with suppliers to source low-carbon materials, certified wood, low-emissions machinery, and advanced energy systems.

Beyond products, our teams optimize construction sequencing to reduce emissions and streamline logistics. These initiatives allow us to consistently deliver buildings that achieve LEED and Carbon Neutral certifications while generating measurable long-term operational savings for our clients.

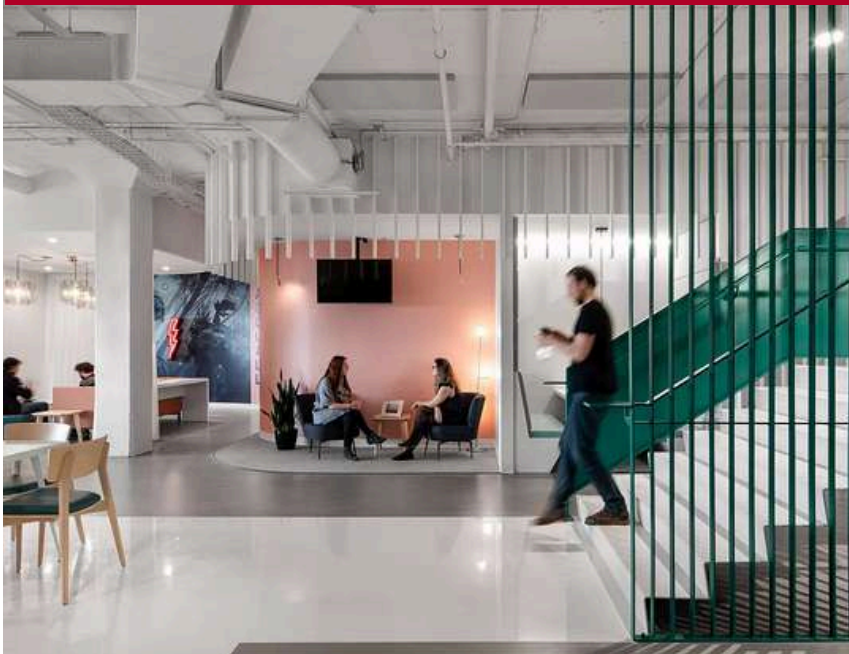
BC: What are some of JCBs’ technological investments that improve the productivity of your teams and optimize logistics and construction processes on your sites?

ASB: Technology is a cornerstone of how JCB builds smarter. We leverage Building Information Modeling (BIM) to improve coordination, anticipate challenges, and

Continued on page 96

“Construction management also enables us to leverage value engineering, innovative materials, and sustainable practices tailored to each client’s priorities.”

—Alexandre-Stéphane Boucher



TOP RIGHT: Cain Lamarre

Fit-out project for the prestigious law firm Cain Lamarre, which is relocating in the heart of downtown Montreal to the former Holt Renfrew Building, an iconic 1930s building. **ABOVE RIGHT:** Office development on four floors and approximately 188,000 square feet for Ubisoft, a leading video game developer in Montreal.

BOTTOM RIGHT: New offices for GSoft (now Workleap) in a building dating from the beginning of the 20th century.





Brasserie Blandino

optimize material use before work begins on-site. Digital project management platforms enhance communication, progress monitoring, and logistics while keeping stakeholders aligned in real time.

On site, we deploy innovative technologies such as the Upbrella system for safer, more efficient envelope renovations, Urban Umbrellas for secure and visually appealing scaffolding, or even SmartFlower units that harness solar energy. By combining innovation with practical application, JCB ensures that

every project benefits from technology that reduces risks, boosts productivity, and drives efficiency and client satisfaction. ♦



Tapis National stands out for its quality, style and design.

A trusted name in the floor covering industry for over 60 years. An endless selection of residential and commercial flooring products for your decorating needs.



8995 Jean Pratt, Montréal, QC H4N 2W7 | 514-993-2995 | tapisnational.com

Commercial & Industrial Painting Solutions

At Action Peinture, we deliver tailored solutions across the commercial and industrial sectors, grounded in a culture that values doing things correctly from the start no matter the size or complexity of the project.

AP
ACTION PEINTURE

(514) 722-7780
info@actionpeinture.com
7066 Rue Marquette
Montréal, Québec
actionpeinture.com

NAVADA

The largest multidisciplinary team in building mechanical & electrical systems in Quebec!

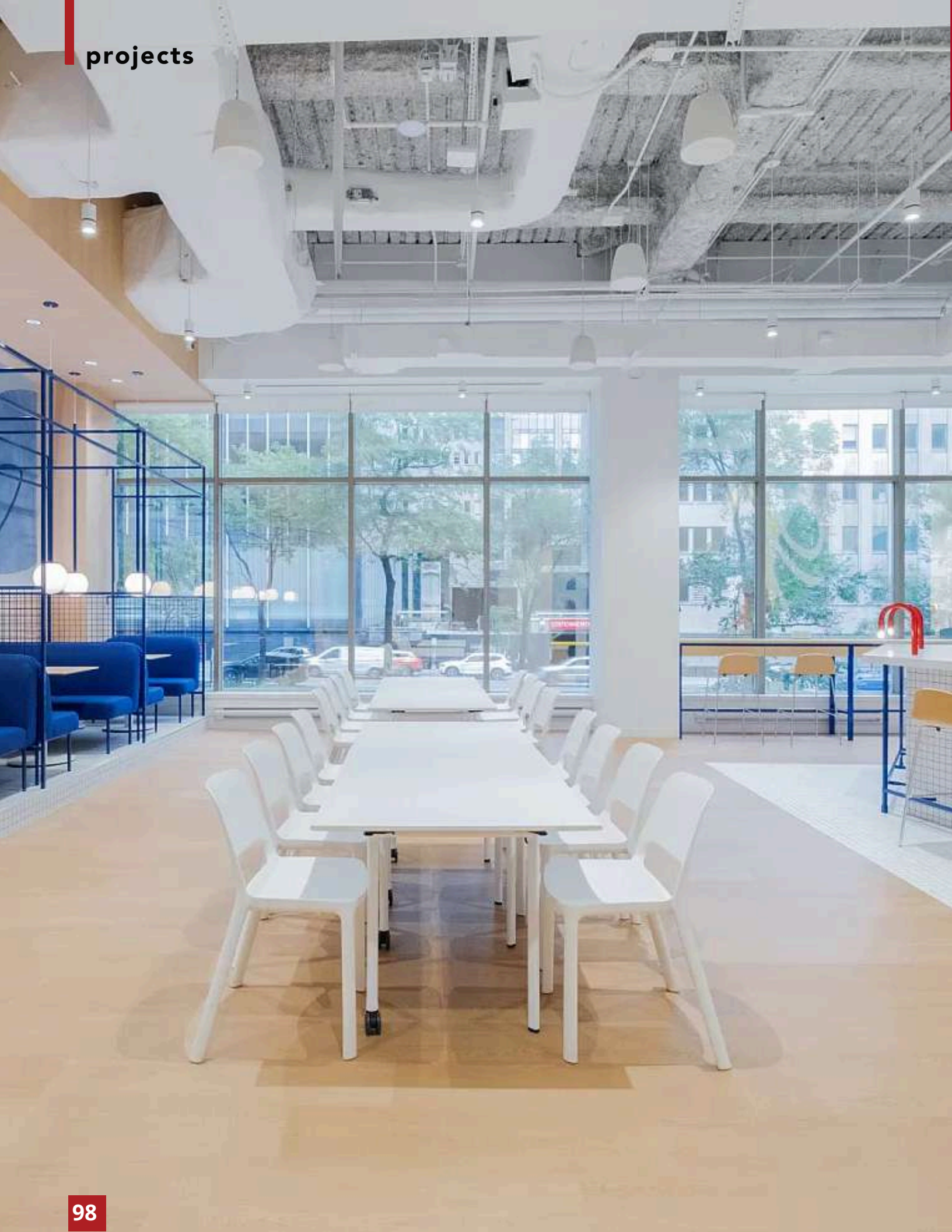
Proud partner of JCB Construction Canada!

An integrated multidisciplinary approach:

- Integrated engineering
- Energy efficiency
- Commercial and industrial refrigeration
- Ventilation, air treatment
- Heating, gas and combustion
- Plumbing
- Pipe fitting
- Electrical
- Building automation
- Preventive maintenance

Our mission: simplify our clients' lives.

NAVADA BONAIR GROUPE NAVADA



“By combining innovation with practical application, JCB ensures that every project benefits from technology that reduces risks, boosts productivity, and drives efficiency and client satisfaction.”

—Alexandre-Stéphane Boucher



THIS PAGE: FCCQ Offices in Montréal. New offices for the Fédération des chambres du commerce du Québec (FCCQ). Located in the heart of downtown Montreal, the bright, spacious new offices provide an ideal working environment for their teams, and a connected, accessible gathering space for all Quebec chambers of commerce. Design By Folio Design inc. Photography © Yanick Lesperance



BuildCanada
Construction Profile Magazine